

Annual Report

TO THE PUBLIC

2006-2007

pathways to success



 **JEFFCO**
PUBLIC SCHOOLS
Building Bright Futures

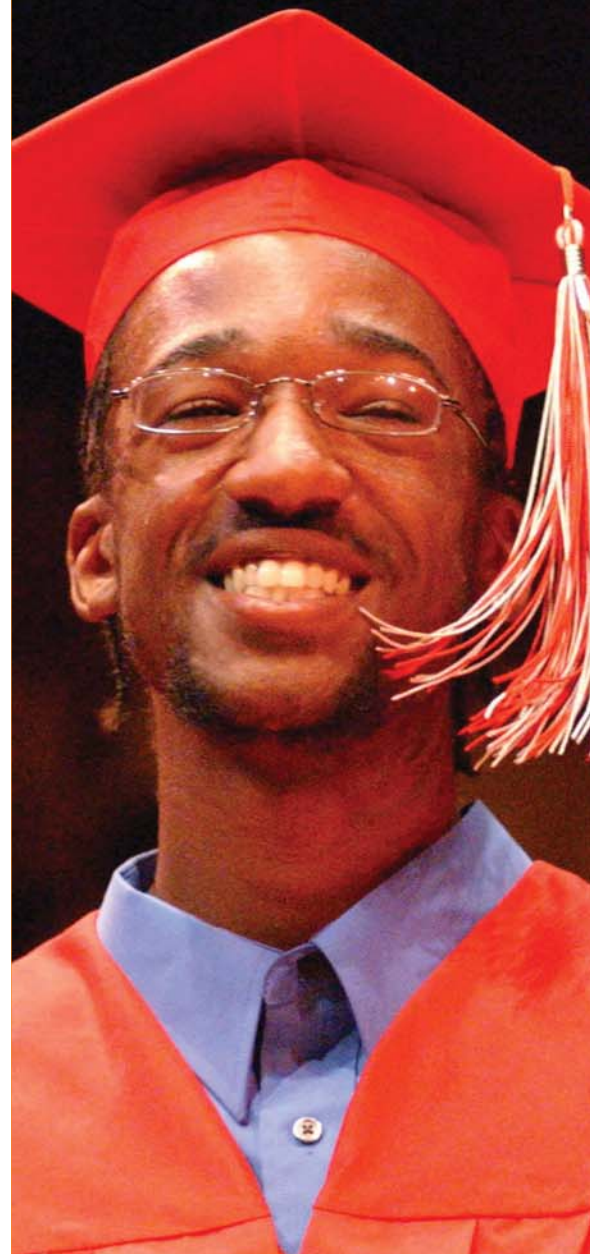


welcome

The 2006-2007 school year was another exciting time for Jeffco Public Schools. This Annual Report was created to provide the community with a look at the highlights of the year, to review the district's performance and to demonstrate how we are helping students chart a pathway to success. The following pages list some of our activities and achievements, but it is in no way meant to be an exhaustive list, rather a snapshot of the many things happening throughout the school year. Some of the information presented is required by law.

Table of Contents

District Leadership.....	1
Strategic Planning.....	3
District Profile.....	4
Academic Achievement.....	8
Safety and Security.....	9
District Budget.....	10
Bond Project.....	12
Assessments.....	13
Test Scores and School Ratings.....	15



our mission

To provide a quality education that prepares all children for a successful future.

our values

- Integrity
- Valuing People
- Teamwork
- Exemplary Performance

district leadership

Superintendent's Message

Jeffco Public Schools has a long-standing tradition of providing a quality education for the children of Jefferson County. While we celebrate this, we also realize it is important to chart new pathways to success for our students so that they will be prepared for the evolving challenges of the world. Today's educational needs are far different than they were just a few short years ago. As the 2006-2007 school year began, the entire district was challenged to examine our existing programs and look for new ways of achieving excellence. We launched an initiative to improve our secondary education programs, which will ultimately lead to new graduation requirements. Teachers, administrators, students and the community came together to develop a budget that will directly support student achievement. We examined ways to help more students stay in school and graduate. And, just as our curriculum and programs progressed to meet the needs of our students, so did our construction program, with the opening of four new or renovated schools.

I take great pride in the accomplishments of this past year and I invite you to review this report to see how we are charting new pathways to success.



Cynthia Stevenson

Dr. Cindy Stevenson
Superintendent



Message from the Board of Education

We are once again honored to share with you the achievements and challenges of Jeffco Public Schools. In this 2006-2007 Annual Report to the public you'll find important details about student assessment scores, finances, and progress on the strategic plan, but this is just one snapshot of the school district. To truly understand the way Jeffco Public Schools positively affects the lives of students, we invite you to attend a school event, participate in a school board meeting, or visit a classroom. You will see an amazing collaborative movement to build a new model in education that will prepare students for the future.

All of us have a stake in the future of our schools. We hope you will review this report to see what we have accomplished this past year and how we are building pathways to success.

The Jefferson County Public Schools Board of Education



Scott Benefield
District 1



Sue Marinelli
District 2



Hereford Percy
District 3



Jane Barnes
District 4



Vince Chowdhury
District 5

Send written correspondence to the Board of Education to:
Jefferson County Public Schools • P.O. Box 4001 • Golden, CO 80401-0001

The Board can be reached via e-mail at board@jeffco.k12.co.us



About the Board of Education

The five members of the Jefferson County Board of Education are elected by voters to four-year terms and serve without pay.

The Board is a policy-making body with powers and duties set by state law. They are responsible for policy related to educational planning, staff, school facilities, finances and communications. Board meetings are open to the public unless otherwise specified. Meeting schedules and minutes are available on the district's Web site.



Community Engagement

The Jefferson County Board of Education feels strongly that the success of the school district and our students depends on the support and input from the entire community. In addition to regular meetings, which are open to the public, during 2006-2007 the Board held public forums to discuss the district's budget and what is required to raise successful children. Board members also visited schools and classrooms on a regular basis and participated in numerous civic activities.

Strategic Planning Advisory Council

The Strategic Planning Advisory Council (SPAC) is the district's advisory group composed of Board of Education members, district leadership, representatives from the employees' associations, parent representatives, as well as citizen and parent leaders from a variety of stakeholder groups. The SPAC holds monthly meetings to advise the district on strategic direction and student achievement.

SPAC Accomplishments for 2006-2007

- Provided input on the draft 2007-08 Strategic Plan goals, objectives, indicators, and targets.
- Elevated community awareness of the Strategic Plan and school/department improvement process.
- Acted as a sounding board for Board of Education and district leadership regarding important district topics, efforts, and issues including the revised graduation requirements and Board Ends Policies.
- Provided membership for the district's Charter School Review Committee.
- Explored current educational data, topics and trends including construction projects, school safety, CSAP results, school day/ school year, and career/technical education as a means of increasing membership's understanding of the district's operation.

Goals

All students graduate prepared for continued learning and the world of work in the 21st century.

All employees are accountable for a high performing organization.



Our Students

86,200 students attended Jeffco Public Schools during the 2006-2007 school year.

Approximately 11 percent of all the K-12 students in Colorado attend a Jeffco School.

We are proud of our diversity:

American Indian/Alaska Native.....	1.18%
Asian or Pacific Islander.....	3.58%
Black.....	1.93%
Hispanic.....	17.91%
White.....	75.39%
*Graduation rate.....	75.3%
*Dropout rate (high school).....	3.1%
Expulsions.....	328
Suspensions.....	6,920
Attendance rate.....	95.3%
Students qualifying for free and reduced lunch	24.69%

**As of 2005-2006*

Sources: Jeffco Public Schools and the Colorado Department of Education

Students from **Deer Creek Middle School** took home the winning entry in the National Engineers Week *Future City Competition*. More than 30,000 students participated from 1,100 schools around the country.



perfect score

Lakewood High School student **Jessica Hennessy** was one of only 67 students nationally to earn a perfect 36 on her 2006 ACT test.

Eric Miller of **Dakota Ridge High School** was Colorado's only sophomore to receive a perfect score on the 2006 ACT test.

Five teams from **Jefferson Academy, Chatfield Senior High School** and **Ralston Valley High School** were recognized as Colorado High School Activities Association *Academic Team Champions* for 2005. Selected schools are recognized for teams and non-athletic programs that have cumulative grade point averages of 3.2 or higher.

Four graduating seniors from Jeffco schools were selected from nearly 2.8 million students as candidates in the *2007 Presidential Scholars Program*. Inclusion in the program is one of the highest honors bestowed upon graduating high school seniors.

Our Schools

Jeffco Public Schools is the largest school district in Colorado.

Number of schools

- 93 elementary schools
- 19 middle schools
- 17 high schools
- 9 option schools
- 12 charter schools

Target average class size

- 24:1 kindergarten
- 20:1 first, second & third grade
- 24:1 fourth grade
- 28:1 fifth & sixth
- *28:1 middle & high school

**Class size varies depending upon subject*

State funding
per pupil
\$6,211.63

Jefferson Academy Elementary School

was named a National Charter School of the Year by the Center for Education Reform.



For the third year in a row, **Lakewood High** was ranked in the top 10 percent of *Newsweek's* list of the 1,300 top high schools in the nation.

Colorado Lt. Governor Jane Norton presented **O'Connell Middle School** with an Outstanding Citizenship Award. The state honored O'Connell for the school's salute to veterans, a large, annual Veterans Day event honoring U.S. military personnel.

For the fifth time in the school's history, **Evergreen High School** brought home the Ellis Cup Trophy as winners of the state's Mock Trial Competition.



Our Teachers

Jeffco Public Schools has approximately 4,700 teachers

Jeffco Public Schools teachers are highly qualified. Many have advanced degrees and several have earned national and state recognition.

Professional Qualification	% of Teachers
Bachelor's Degree Only	39.5%
Master's Degree	60%
Ph.D.	0.5%

Licensed	% of Teachers
Emergency	0%*
Initial	20%*

*Based on 4,068 total regular classroom teachers

The federal No Child Left Behind (NCLB) legislation places a strong emphasis on having a highly qualified teacher in every classroom. In general, NCLB defines a highly qualified teacher as one that is fully licensed by the state and endorsed in the subject area and who demonstrates competence in the content areas taught.

Teachers Highly Qualified in the District				
School Year	2003	2004	2005	2006
Percentage Highly Qualified	93.77%	97.17%	96.36%	99.88%
Target Percentage	-	95.83%	97.91%	100%
Target Made	-	Yes	No	No

Classrooms in the District Taught by Highly Qualified Teachers				
School Year	2003	2004	2005	2006
Percentage Highly Qualified	94.06%	98.34%	97.11%	99.91%
Target Percentage	-	96.02%	98.01%	100%
Target Made	-	Yes	No	No

Classes Taught by Highly Qualified Teachers in the District by High and Low Poverty		
	High Poverty Schools ¹	Low Poverty Schools ²
Percentage in District	100%	100%
Percentage in State	97.94%	98.47%

¹ Schools are ranked from highest to lowest based on their free and reduced lunch eligibility counts. High-poverty schools are the 25% of schools with the highest poverty rate.

² Low-poverty schools are the 25% of schools with the lowest poverty rate, as measured by free and reduced lunch eligibility.

Source: Colorado Department of Education

Teacher Salaries

\$32,408 - First-year teacher with a bachelor's degree and teaching license

\$35,466 - First-year teacher with a master's degree and teaching license

\$56,870 - Teacher with 10 years experience, a master's degree and teaching license



Coronado Elementary School Teacher Wins National Award

The district celebrated when its third teacher, in as many years, won the prestigious Milken Family Foundation Educator Award. Karen Brown, a third and fourth grade teacher at Coronado Elementary School, was the 2006 recipient of a \$25,000 prize for her exceptional dedication and talent as an educator.

Warren Tech's Mary Stecklein was named 2006-2007 Outstanding Career and Technical Education Educator from a 17-state western region.

Our Staff

In schools

Teachers	4,751
School principals and assistant principals.....	267
Nurses, psychologists and social workers.....	377
Counselors.....	134
Library media specialists.....	139
Classroom aides (working with special needs children).....	425
Health clinic aides.....	117
Educational assistants.....	966
Tutors.....	151
School secretaries.....	374
Preschool teachers and child care workers.....	317
Charter school staff.....	633
Campus supervisors.....	65

Supporting schools

Central administrators	
Resource, curriculum specialists, project coordinators.....	64
Licensed administrators.....	42
Non-licensed administrators.....	36
Central secretaries.....	211
Professional staff.....	124
(department managers, technology staff, etc.)	
Support staff.....	1,107
(facility maintenance, custodial, equipment repair, food services, insurance, etc.)	
Bus drivers and transportation personnel.....	390
Security personnel.....	22
Athletic coaches, ticket sales, locker room aides, etc.....	148
Substitutes (for all positions).....	1,132
Others.....	120
Total.....	12,122



Academic Achievement

- A total of 81 percent of Jeffco Public Schools were rated as “excellent,” “high” or “average” on the State Accountability Reports (“SARs”).
- The Colorado Department of Education gave 19 Jeffco Public Schools “John Irwin School of Excellence” awards for ranking in the top 8 percent of state schools overall academic performance based on the 2006 School Accountability Reports.
- The district’s 2006-2007 CSAP performance improved in most areas compared to the previous year. This improvement includes scoring higher on 5 out of 8 CSAP math tests and all three CSAP science tests in 2006-2007.
- For the No Child Left Behind accountability measure, Adequate Yearly Progress (“AYP”), Jeffco Public Schools met more targets than any other district in the state. A total of 136 of our schools met 100 percent of AYP indicators.
- All Jeffco Public Schools are accredited by the district and 67 schools are recognized as “high performing” on accreditation.
- When a student is struggling with developing reading skills and is not reading at grade level, the student is placed on an Individualized Literacy Plan (ILP). A reduction in literacy plans indicates that more students have successfully met the district and state expectations in literacy. The percentage of third grade students on Individualized Literacy Plans declined by 4.5 percentage points from 24.4 to 19.9. For grades four through six, the percentage reduction of literacy plans was 2.9 percentage points while middle school literacy plans declined by 3.3 percentage points over the same time period.
- The number of students completing Advanced Placement (AP) classes increased to 15.8 percent in 2006-2007 compared to 14.9 percent the previous year. The majority (59.3 percent) of Advanced Placement (AP) exams taken by Jeffco Public Schools’ students score a “3” or higher (compared to 60.3 percent the previous year). The AP exams allow students an opportunity to earn credit or advanced placement at most of the nation’s colleges and universities. Scores of “3” and above often convert to college credit.



Graduation Requirements

In order to receive a diploma from a Jeffco Public High School, students must complete 22 credits in grades 9-12 in the following areas of instruction:

English Language Arts – 4 credits

Social Studies – 3 credits

(including history, geography, civics, and economics)

Mathematics – 2 credits

(at least 1 credit must be at the level of algebra I or above)

Science – 2 credits

Physical Education/Health – ½ credit

Fine/Practical Arts – ½ credit

Approved electives – 10 credits

A credit is the equivalent of the completion of a full-year course. A half-credit is the equivalent of the completion of a semester course.

Also required:

- Achievement in content standards as demonstrated by mastery of the curriculum which may include, but is not limited to: daily classroom assignments, the Colorado Student Assessment Program, the district assessment program, classroom assessments, and student participation in, and completion of, assigned projects.
- For special education students, completion of the requirements and goals as listed on a student’s Individual Education Plan (IEP) which may include modified content standards.

Details of the Jeffco Public Schools graduation requirements are covered in District Policy IKF, which can be found online at

www.jeffcopublicschools.org

During the 2006-2007 school year, Jeffco Public Schools began a comprehensive review of graduation requirements to ensure that the district’s curriculum meets the needs of the 21st century student.

Safety is embedded in all we do in Jeffco Public Schools. We believe that in order to have a successful learning environment, students and staff must feel safe so they can concentrate on our primary mission of education. Jeffco Public Schools has a five-pronged approach to school safety:

Academic Excellence

In Jeffco Public Schools, we believe safety begins with a focus on academic achievement.

Prevention

Our schools have developed programs to support positive behavior and discourage bullying. Our district has a strong anti-harassment policy, and students are expected to treat each other fairly and without bias. We believe effective schools must create a climate that demonstrates caring and a sense of community.

Intervention

Counselors, campus supervisors, social workers, psychologists and teachers are trained in intervention strategies. Students are encouraged to share concerns and safety issues with school staff.

Partnerships

Partnerships are a key component to our safety plan and involve parents, community groups, law enforcement, business and social service agencies. When parents are involved in their children's education, students are more likely to experience success and less likely to engage in anti-social behaviors.

Crisis Response

Each school has developed an emergency management plan in cooperation with appropriate community partners, such as law enforcement and fire departments. Training is a critical element of the emergency management plan, and each member of the response team receives training. The district has developed a comprehensive Safety Plan which includes an accountability component. Twice each year, every school administrator completes a safety checklist.



Jeffco Public Schools funding comes from both state and local sources. Each year, the budget created by the state legislature and the governor determines how much of the state's total budget is allocated to education. The portion allocated for K-12 education is then divided among 178 school districts throughout the state using the state's School Finance Act funding formulas. The district also receives local funding from property tax and specific ownership tax.

The district's 2006-2007 budget was developed with community input and was designed to maximize student achievement. It was used to develop curriculum, buy textbooks and supplies, to transport students to school, to feed them and to maintain and heat buildings. The largest portion of the budget was used to pay salaries and provide medical benefits for teachers and support staff.

During 2004, voters provided Jeffco Public Schools with funds to build new schools and upgrade existing facilities. During the 2006-2007 school year, those funds helped the district continue an extensive building program.

Where the Funding Comes From

State of Colorado	\$311,528,788
Property Tax.....	\$251,662,204
Automobile Ownership Tax.....	\$29,414,761
Other	\$20,774,755

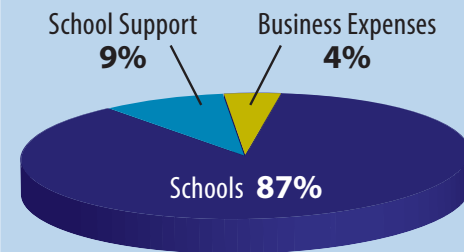
Total Revenue \$613,380,508.00

Of every \$1 the district spent...

87% was spent for and at schools

9% was spent for school support

4% was spent on business expenses



State funding per pupil \$6,211.63

Jeffco Public Schools once again received the Certificate of Achievement for Excellence in Financial Reporting for the Comprehensive Annual Financial Report (CAFR) from the Government Finance Officers Association (GFOA). This represents the 24th year that the district has received the award. This award is designed to recognize and encourage excellence in financial reporting by state and local governments.

The district also received its second "Distinguished Budget Presentation Award" from the Government Finance Officers Association.



How the Dollars are Spent



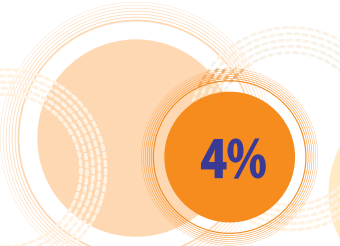
Our Schools \$474,946,635

- Staff: Teachers, Principals, Assistant Principals
- Class Size Relief
- Exceptional Student Services: ESL, Gifted/Talented, Native American, Health Services, Special Education, Supplies and Materials, Transportation, Custodial, Telecommunications, Utilities



School Support \$50,209,547

- Community Superintendents
- Exceptional Student Services: Intervention Services, Day Treatment, Itinerant and related services
- Department of Learning and Educational Achievement: Assessment, Curriculum and Instruction, Career Development, Diversity, Library Media, Instructional Technology, Staff Development
- Maintenance
- Athletics



Business Expenses \$23,208,065

- Board of Education
- Superintendent
- Districtwide Administration
- Communications
- County Treasurer Fees
- Business Services
- Human Resources

The district's detailed budget is online at:
www.jeffcopublicschools.org/finance



Building Schools for the 21st Century

In 2004, voters agreed to provide additional funds to finance the building of 21st century schools for the children of Jefferson County. During the 2006-2007 school year, the voters' wishes were realized with the opening of two new schools, the reopening of one rebuilt school and the groundbreakings for 4 major school projects. Hundreds of smaller renovations and upgrades were also completed.



- The new Wayne Carle Middle School and the Meiklejohn Elementary School opened their doors giving the district a total of 150 schools. The 99,242 square-foot Wayne Carle Middle School opened with 327 students enrolled and Meiklejohn Elementary had a student population of 242 students.

- A dedication ceremony was held to mark the opening of the Dunstan Middle School facility, a replacement for the original school which was outdated and found to be too costly to renovate.

- Construction began on a new Golden High School. The new \$33 million school will replace the existing and outdated facility originally constructed in 1955. The district determined that the cost to replace the original school was more cost efficient than renovating the existing facility. The new school, located on the same site, will accommodate up to 1,450 students. Work also began on two new Jeffco preschools.



- Chatfield High School began a major renovation project including the addition of classrooms, office space, relocated athletic fields, infrastructure improvements and more on-site student parking.

“During the 2006-2007 school year, the voters’ wishes were realized...”



Assessments

Colorado has three systems to evaluate the performance of schools and school districts and to help monitor pathways to success: district accreditation, School Accountability Reports (SAR), and Adequate Yearly Progress (AYP) as part of the No Child Left Behind Act. These accountability systems were designed to help parents and taxpayers make informed choices about education in the state and to enhance the ability of the Colorado General Assembly and the State Board of Education to monitor the progress of schools.

State Accreditation

State accreditation is the Colorado Department of Education's (CDE) ongoing review of overall school districts and school performance. Schools must meet performance indicators for academic achievement for all students in all curriculum areas, school safety, school and community partnerships, and financial accountability. Schools receive one of the following ratings:

- Accredited;
- Accredited; Accreditation Watch;
- Accredited; Accreditation Probation;
- Non-Accredited

The district also recognizes schools as "accredited: high performing" when they exceed accreditation expectations for that particular school year. For 2006-2007, all schools in Jefferson County were accredited. A total of 67 schools were recognized as "accredited: high performing," 79 schools were "accredited," 20 schools were identified as "accredited: academic watch," and one school was identified as "accredited: probation." Accreditation information for each Jeffco school is listed on pages 36-39.

School Accountability Reports

The Colorado Department of Education publishes the School Accountability Report (SAR) to provide a rating of public schools in comparison with other schools in the state for parents and community members. The SAR includes an overall academic performance rating (excellent, high, average, low, unsatisfactory) and an academic improvement rating (significant improvement, improvement, stable, decline, significant decline). These ratings are calculated annually from Colorado Student Assessment Program and Colorado ACT data.

Other information provided in each school's SAR:

- CSAP performance
- Safety and discipline incidents
- Student/teacher ratio
- Teacher qualifications
- Budget and expenditures

The School Accountability Report issued in December 2007, for performance during the 2006-2007 school year, showed that 54 percent of our neighborhood, option and charter schools earned excellent or high ratings, 27 percent earned "average," 13 percent "low," 2 percent "unsatisfactory," and 3 percent received no ratings. Schools do not receive ratings if they meet one of the following criteria:

- The school does not have students within the grade level for Colorado Student Assessment Program (CSAP) testing.
- More than 95 percent of enrolled students had an Individual Education Program (IEP).

A complete list of ratings is available on pages 36-39.

Adequate Yearly Progress

The most recent accountability system for all Colorado schools, Adequate Yearly Progress, (AYP) is what the federal No Child Left Behind Act (NCLB) uses to measure the achievement of individual schools, school districts and state education programs.

The NCLB requires that every school or district that receives funds under NCLB Title I meet specific academic goals in reading and math each year as measured by the Colorado Student Assessment Program (CSAP). School and district performance toward meeting those goals is called Adequate Yearly Progress. The Colorado Department of Education annually reviews the performance of each school district that receives funds under NCLB Title I (federal funds for low income students). To make AYP, districts must meet targets for participation and performance in reading and math assessments for all applicable subgroups of children in the district (race/ethnicity, economically disadvantaged, students with disabilities, and students with limited English proficiency). Based on assessment results, a district is identified for Title I Program Improvement if it did not make AYP in the same content area (reading or math) for two consecutive years.

Jeffco Public Schools had 153 AYP targets for 2006-2007 and met 145 of them, or 94.7 percent. Since AYP is an “all or nothing” system, and the district did not meet 100 percent of its targets, Jeffco Public Schools was placed on an improvement program according to federal guidelines. A complete list of Jeffco Public Schools AYP determinations is available on pages 36-39 of this report.



test scores & school ratings

CSAP Reading

Grade 3	Group	Year	Unsatisfactory	Partially Proficient	Proficient	Advanced	Not Tested
	Female	2006-2007	6.0%	14.3%	69.4%	10.0%	0.4%
	Male		7.7%	17.3%	66.8%	8.1%	0.2%
	American Indian		11.4%	15.2%	72.2%	1.3%	0.0%
	Asian		5.3%	9.8%	74.2%	10.2%	0.4%
	Black		6.3%	23.8%	61.1%	8.7%	0.0%
	Hispanic		13.4%	26.0%	57.2%	3.1%	0.4%
	White		5.2%	13.3%	70.7%	10.6%	0.3%
	Non English Proficient		51.8%	25.4%	19.3%	0.0%	3.5%
	Limited English Proficient		9.9%	38.2%	51.2%	0.7%	0.0%
	Special Education		36.0%	27.5%	35.1%	1.0%	0.3%
	Gifted/Talented		0.5%	1.2%	58.1%	39.3%	0.9%
	Economically Disadvantaged		13.9%	27.0%	56.0%	2.9%	0.2%
	All Jeffco Students	2006-2007	6.9%	15.8%	68.1%	9.0%	0.3%
		2005-2006	7.9%	16.5%	68.3%	6.9%	0.4%
All Colorado Students	2006-2007	10%	19%	64%	7%	0%	
	2005-2006	11%	18%	65%	6%	1%	

Grade 3 Spanish	Group	Year	Unsatisfactory	Partially Proficient	Proficient	Advanced	Not Tested
	Female	2006-2007	2.9%	8.6%	68.6%	20.0%	0.0%
	Male		6.5%	25.8%	61.3%	6.5%	0.0%
	American Indian		0.0%	0.0%	0.0%	0.0%	0.0%
	Asian		0.0%	0.0%	0.0%	0.0%	0.0%
	Black		0.0%	0.0%	0.0%	0.0%	0.0%
	Hispanic		4.8%	17.7%	64.5%	12.9%	0.0%
	White		0.0%	0.0%	0.0%	0.0%	0.0%
	Non English Proficient		8.1%	18.9%	70.3%	2.7%	0.0%
	Limited English Proficient		0.0%	13.8%	58.6%	27.6%	0.0%
	Special Education		0.0%	0.0%	0.0%	0.0%	0.0%
	Gifted/Talented		0.0%	0.0%	0.0%	0.0%	0.0%
	Economically Disadvantaged		4.7%	15.6%	65.6%	14.1%	0.0%
	All Jeffco Students	2006-2007	4.5%	16.7%	65.2%	13.6%	0.0%
		2005-2006	17.2%	22.4%	50.0%	10.3%	0.0%
All Colorado Students	2006-2007	18%	22%	50%	9%	1%	
	2005-2006	14%	23%	52%	11%	1%	

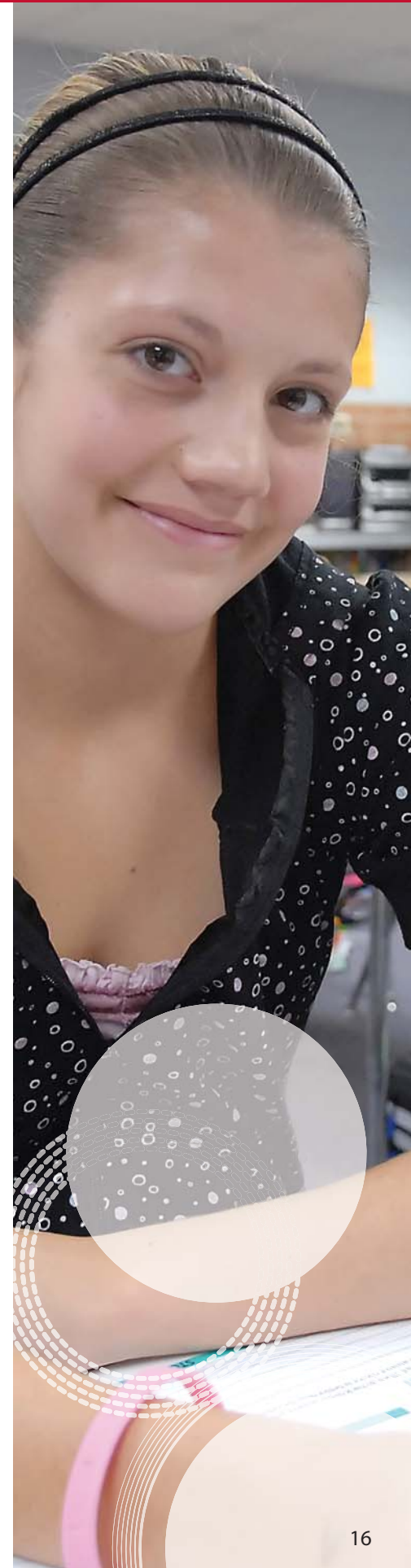
Grade 4	Group	Year	Unsatisfactory	Partially Proficient	Proficient	Advanced	Not Tested
	Female	2006-2007	7.0%	17.0%	64.1%	11.6%	0.2%
	Male		10.6%	21.5%	60.4%	7.2%	0.3%
	American Indian		15.5%	19.7%	54.9%	8.5%	1.4%
	Asian		7.5%	17.9%	63.5%	10.7%	0.4%
	Black		15.8%	30.0%	53.3%	0.8%	0.0%
	Hispanic		18.1%	32.3%	46.6%	2.6%	0.4%
	White		6.2%	15.7%	66.5%	11.3%	0.2%
	Non English Proficient		50.5%	33.3%	10.8%	0.0%	5.4%
	Limited English Proficient		29.0%	49.3%	21.7%	0.0%	0.0%
	Special Education		41.6%	34.0%	22.3%	1.3%	0.8%
	Gifted/Talented		0.3%	0.7%	59.6%	39.4%	0.0%
	Economically Disadvantaged		18.8%	32.9%	45.6%	2.4%	0.3%
	All Jeffco Students	2006-2007	8.8%	19.3%	62.2%	9.4%	0.3%
		2005-2006	7.3%	18.5%	67.6%	6.4%	0.3%
All Colorado Students	2006-2007	13%	22%	58%	6%	0%	
	2005-2006	10%	22%	62%	5%	0%	

Colorado Student Assessment Program (CSAP)

CSAP is the Colorado Student Assessment Program given to Colorado public school students in grades three through 10. Depending on the grade, the CSAP tests students' skills in reading, writing, mathematics and science. CSAP includes multiple choice and short and long essay questions. For example, on math tests, students must not only be able to solve a problem, but also be able to explain how they arrived at the answer. The CSAP is based on state content standards and measures student progress toward the standards. Students are not compared to each other, but are rated on how well they are meeting standards. The rating scale is advanced, proficient, partially proficient and unsatisfactory.



CSAP Reading *continued*



Grade 5	Group	Year	Unsatisfactory	Partially Proficient	Proficient	Advanced	Not Tested
	Female	2006-2007	7.2%	15.8%	65.9%	10.7%	0.3%
	Male		12.3%	17.5%	61.5%	8.3%	0.3%
	American Indian		13.2%	20.6%	61.8%	2.9%	1.5%
	Asian		9.4%	17.6%	60.1%	11.6%	1.3%
	Black		14.9%	29.1%	53.4%	2.7%	0.0%
	Hispanic		21.1%	27.8%	47.6%	3.3%	0.2%
	White		6.8%	13.5%	68.2%	11.2%	0.3%
	Non English Proficient		71.1%	19.8%	5.8%	0.0%	3.3%
	Limited English Proficient		27.5%	47.0%	25.0%	0.0%	0.4%
Special Education		42.3%	29.6%	26.3%	0.9%	0.9%	
Gifted/Talented		0.1%	1.1%	57.7%	40.9%	0.1%	
Economically Disadvantaged		21.6%	28.5%	46.8%	2.7%	0.4%	
All Jeffco Students	2006-2007	9.8%	16.7%	63.7%	9.5%	0.3%	
	2005-2006	9.5%	14.6%	64.3%	11.2%	0.4%	
All Colorado Students	2006-2007	13%	18%	59%	9%	0%	
	2005-2006	12%	18%	60%	9%	1%	

Grade 6	Group	Year	Unsatisfactory	Partially Proficient	Proficient	Advanced	Not Tested
	Female	2006-2007	3.9%	13.7%	64.6%	17.3%	0.5%
	Male		6.9%	16.0%	64.2%	12.5%	0.3%
	American Indian		7.5%	17.9%	64.2%	10.4%	0.0%
	Asian		6.3%	13.9%	59.5%	19.4%	0.8%
	Black		6.4%	29.1%	59.1%	5.5%	0.0%
	Hispanic		12.7%	27.9%	54.0%	5.1%	0.3%
	White		3.7%	11.5%	67.2%	17.1%	0.4%
	Non English Proficient		51.6%	28.6%	15.4%	0.0%	4.4%
	Limited English Proficient		16.5%	49.0%	34.6%	0.0%	0.0%
Special Education		29.9%	33.6%	32.8%	2.0%	1.7%	
Gifted/Talented		0.1%	0.4%	46.5%	52.8%	0.1%	
Economically Disadvantaged		12.4%	27.2%	56.6%	3.4%	0.3%	
All Jeffco Students	2006-2007	5.5%	14.9%	64.4%	14.8%	0.4%	
	2005-2006	6.2%	16.1%	64.1%	13.2%	0.4%	
All Colorado Students	2006-2007	10%	19%	59%	12%	1%	
	2005-2006	10%	20%	59%	10%	1%	

Grade 7	Group	Year	Unsatisfactory	Partially Proficient	Proficient	Advanced	Not Tested
	Female	2006-2007	6.4%	17.1%	62.9%	13.1%	0.5%
	Male		11.7%	19.2%	61.0%	7.5%	0.6%
	American Indian		10.9%	29.3%	55.4%	3.3%	1.1%
	Asian		8.8%	13.9%	64.4%	12.5%	0.5%
	Black		18.4%	34.6%	44.9%	0.7%	1.5%
	Hispanic		20.2%	30.4%	46.2%	2.8%	0.4%
	White		6.5%	15.1%	65.7%	12.1%	0.6%
	Non English Proficient		68.9%	24.6%	3.3%	0.0%	3.3%
	Limited English Proficient		34.7%	49.1%	15.8%	0.5%	0.0%
Special Education		45.8%	28.2%	23.8%	0.6%	1.6%	
Gifted/Talented		0.2%	0.5%	57.4%	41.4%	0.4%	
Economically Disadvantaged		20.5%	30.6%	46.5%	1.7%	0.7%	
All Jeffco Students	2006-2007	9.1%	18.2%	61.9%	10.3%	0.6%	
	2005-2006	8.3%	19.3%	62.6%	9.3%	0.5%	
All Colorado Students	2006-2007	13%	21%	57%	9%	1%	
	2005-2006	13%	22%	56%	8%	1%	

test scores & school ratings

CSAP Reading *continued*

Grade 8	Group	Year	Unsatisfactory	Partially Proficient	Proficient	Advanced	Not Tested
	Female	2006-2007	5.9%	19.1%	62.8%	11.6%	0.7%
	Male		10.8%	22.2%	58.0%	8.1%	0.8%
	American Indian		15.1%	16.4%	61.6%	5.5%	1.4%
	Asian		7.5%	15.1%	63.4%	12.4%	1.6%
	Black		17.9%	25.6%	52.1%	2.6%	1.7%
	Hispanic		17.6%	33.2%	44.2%	3.6%	1.4%
	White		6.2%	18.2%	63.8%	11.3%	0.6%
	Non English Proficient		71.2%	19.2%	0.0%	0.0%	9.6%
	Limited English Proficient		33.8%	49.0%	15.9%	0.0%	1.3%
Special Education		44.0%	32.3%	20.5%	0.2%	3.1%	
Gifted/Talented		0.1%	1.6%	59.6%	38.7%	0.0%	
Economically Disadvantaged		19.3%	33.1%	44.2%	2.2%	1.1%	
All Jeffco Students	2006-2007	8.4%	20.7%	60.3%	9.8%	0.8%	
	2005-2006	8.5%	18.1%	62.4%	10.2%	0.8%	
All Colorado Students	2006-2007	12%	24%	55%	8%	1%	
	2005-2006	11%	21%	57%	9%	1%	

Grade 9	Group	Year	Unsatisfactory	Partially Proficient	Proficient	Advanced	Not Tested
	Female	2006-2007	4.1%	16.3%	71.8%	6.2%	1.7%
	Male		8.3%	22.0%	64.5%	3.2%	2.0%
	American Indian		6.8%	24.3%	62.2%	1.4%	5.4%
	Asian		4.9%	18.1%	69.0%	6.6%	1.3%
	Black		9.0%	30.6%	56.7%	2.2%	1.5%
	Hispanic		16.2%	31.0%	48.3%	1.2%	3.3%
	White		3.8%	16.1%	73.1%	5.5%	1.5%
	Non English Proficient		66.3%	16.3%	3.5%	0.0%	14.0%
	Limited English Proficient		31.0%	47.2%	19.0%	0.0%	2.8%
Special Education		32.2%	39.7%	23.1%	0.4%	4.7%	
Gifted/Talented		0.5%	1.4%	76.3%	21.1%	0.8%	
Economically Disadvantaged		14.8%	31.2%	50.0%	0.8%	3.2%	
All Jeffco Students	2006-2007	6.2%	19.2%	68.1%	4.7%	1.8%	
	2005-2006	7.1%	18.0%	67.1%	5.1%	2.7%	
All Colorado Students	2006-2007	8%	24%	62%	4%	2%	
	2005-2006	10%	22%	61%	5%	2%	

Grade 10	Group	Year	Unsatisfactory	Partially Proficient	Proficient	Advanced	Not Tested
	Female	2006-2007	3.5%	13.7%	67.1%	13.3%	2.3%
	Male		9.3%	20.9%	60.3%	7.4%	2.1%
	American Indian		12.5%	27.3%	46.6%	4.5%	9.1%
	Asian		8.7%	23.4%	56.7%	10.4%	0.9%
	Black		14.0%	20.6%	59.8%	0.9%	4.7%
	Hispanic		13.8%	29.1%	51.1%	3.3%	2.8%
	White		4.5%	14.4%	67.0%	12.1%	2.0%
	Non English Proficient		62.2%	25.6%	0.0%	0.0%	12.2%
	Limited English Proficient		23.1%	57.9%	16.5%	0.0%	2.5%
Special Education		30.7%	41.0%	21.3%	0.4%	6.6%	
Gifted/Talented		0.1%	0.8%	56.7%	41.7%	0.7%	
Economically Disadvantaged		14.9%	31.7%	46.7%	2.8%	3.8%	
All Jeffco Students	2006-2007	6.4%	17.3%	63.7%	10.3%	2.2%	
	2005-2006	7.8%	18.9%	57.3%	12.9%	3.1%	
All Colorado Students	2006-2007	8%	19%	60%	9%	3%	
	2005-2006	9%	20%	56%	12%	3%	



CSAP Writing



Grade 3	Group	Year	Unsatisfactory	Partially Proficient	Proficient	Advanced	Not Tested
	Female	2006-2007	1.8%	28.3%	53.7%	16.1%	0.1%
	Male		3.7%	39.4%	47.9%	8.5%	0.4%
	American Indian		1.2%	54.9%	41.5%	2.4%	0.0%
	Asian		0.4%	30.9%	48.9%	18.8%	0.9%
	Black		3.9%	45.7%	44.9%	5.5%	0.0%
	Hispanic		6.2%	48.5%	39.8%	5.3%	0.2%
	White		2.0%	29.7%	54.0%	14.0%	0.2%
	Non English Proficient		26.5%	61.9%	8.0%	0.0%	3.5%
	Limited English Proficient		1.4%	66.4%	30.7%	1.4%	0.0%
	Special Education		14.7%	64.1%	19.6%	0.7%	0.8%
	Gifted/Talented		0.2%	4.4%	48.2%	46.8%	0.2%
	Economically Disadvantaged		6.0%	51.9%	36.9%	4.8%	0.3%
All Jeffco Students	2006-2007	2.8%	34.0%	50.7%	12.2%	0.2%	
	2005-2006	3.9%	34.2%	45.2%	16.5%	0.3%	
All Colorado Students	2006-2007	6%	40%	46%	9%	0%	
	2005-2006	7%	41%	41%	11%	0%	

Grade 3 Spanish	Group	Year	Unsatisfactory	Partially Proficient	Proficient	Advanced	Not Tested
	Female	2006-2007	0.0%	12.1%	60.6%	27.3%	0.0%
	Male		9.7%	19.4%	51.6%	19.4%	0.0%
	American Indian		0.0%	0.0%	0.0%	0.0%	0.0%
	Asian		0.0%	0.0%	0.0%	0.0%	0.0%
	Black		0.0%	0.0%	0.0%	0.0%	0.0%
	Hispanic		5.0%	16.7%	55.0%	23.3%	0.0%
	White		0.0%	0.0%	0.0%	0.0%	0.0%
	Non English Proficient		8.3%	19.4%	52.8%	19.4%	0.0%
	Limited English Proficient		0.0%	10.7%	60.7%	28.6%	0.0%
	Special Education		0.0%	0.0%	0.0%	0.0%	0.0%
	Gifted/Talented		0.0%	0.0%	0.0%	0.0%	0.0%
	Economically Disadvantaged		3.3%	14.8%	57.4%	24.6%	0.0%
All Jeffco Students	2006-2007	4.7%	15.6%	56.3%	23.4%	0.0%	
	2005-2006	17.5%	24.6%	43.9%	14.0%	0.0%	
All Colorado Students	2006-2007	18%	28%	39%	14%	0%	
	2005-2006	20%	30%	39%	10%	0%	

Grade 4	Group	Year	Unsatisfactory	Partially Proficient	Proficient	Advanced	Not Tested
	Female	2006-2007	3.9%	32.1%	49.7%	13.9%	0.3%
	Male		5.9%	42.5%	43.6%	7.5%	0.5%
	American Indian		12.7%	42.3%	33.8%	9.9%	1.4%
	Asian		6.3%	34.5%	43.3%	15.5%	0.4%
	Black		6.7%	50.0%	40.8%	2.5%	0.0%
	Hispanic		11.2%	53.1%	31.4%	3.9%	0.4%
	White		3.0%	33.2%	51.1%	12.4%	0.4%
	Non English Proficient		43.0%	48.4%	3.2%	0.0%	5.4%
	Limited English Proficient		12.5%	73.2%	14.0%	0.4%	0.0%
	Special Education		22.4%	61.9%	13.7%	0.6%	1.3%
	Gifted/Talented		0.0%	5.3%	55.0%	39.7%	0.0%
	Economically Disadvantaged		11.5%	55.2%	30.3%	2.6%	0.4%
All Jeffco Students	2006-2007	4.9%	37.4%	46.6%	10.7%	0.4%	
	2005-2006	4.1%	35.7%	49.8%	10.2%	0.3%	
All Colorado Students	2006-2007	8%	42%	41%	8%	0%	
	2005-2006	8%	42%	42%	8%	0%	

test scores & school ratings

CSAP Writing *continued*

Grade 5	Group	Year	Unsatisfactory	Partially Proficient	Proficient	Advanced	Not Tested
	Female	2006-2007	2.0%	27.5%	54.6%	15.7%	0.2%
	Male		5.1%	40.5%	45.6%	8.5%	0.3%
	American Indian		4.4%	44.1%	47.1%	2.9%	1.5%
	Asian		5.2%	28.9%	50.4%	14.7%	0.9%
	Black		6.1%	54.1%	35.1%	4.7%	0.0%
	Hispanic		8.1%	54.0%	34.5%	3.4%	0.0%
	White		2.3%	28.8%	54.3%	14.3%	0.2%
	Non English Proficient		43.0%	48.8%	5.8%	0.0%	2.5%
	Limited English Proficient		5.5%	78.4%	15.7%	0.0%	0.4%
	Special Education		15.5%	65.8%	17.0%	1.1%	0.6%
	Gifted/Talented		0.0%	3.8%	55.7%	40.5%	0.0%
	Economically Disadvantaged		8.7%	54.4%	34.0%	2.7%	0.1%
All Jeffco Students	2006-2007	3.6%	34.1%	50.0%	12.0%	0.2%	
	2005-2006	3.3%	28.3%	51.4%	16.5%	0.5%	
All Colorado Students	2006-2007	5%	37%	47%	10%	0%	
	2005-2006	6%	34%	47%	13%	1%	

Grade 6	Group	Year	Unsatisfactory	Partially Proficient	Proficient	Advanced	Not Tested
	Female	2006-2007	1.4%	22.3%	57.0%	18.9%	0.4%
	Male		3.8%	35.4%	50.0%	10.3%	0.4%
	American Indian		3.0%	29.9%	61.2%	6.0%	0.0%
	Asian		3.2%	22.1%	51.0%	22.1%	1.6%
	Black		0.9%	45.5%	45.5%	8.2%	0.0%
	Hispanic		6.0%	48.1%	40.2%	5.5%	0.2%
	White		1.9%	24.6%	56.7%	16.4%	0.4%
	Non English Proficient		31.9%	51.6%	11.0%	0.0%	5.5%
	Limited English Proficient		5.3%	71.6%	23.0%	0.0%	0.0%
	Special Education		15.3%	63.4%	18.5%	1.2%	1.7%
	Gifted/Talented		0.1%	2.1%	49.9%	47.8%	0.0%
	Economically Disadvantaged		6.7%	46.9%	41.9%	4.0%	0.4%
All Jeffco Students	2006-2007	2.7%	29.1%	53.4%	14.5%	0.4%	
	2005-2006	2.6%	27.8%	54.2%	15.1%	0.3%	
All Colorado Students	2006-2007	5%	35%	49%	11%	1%	
	2005-2006	5%	35%	48%	11%	1%	

Grade 7	Group	Year	Unsatisfactory	Partially Proficient	Proficient	Advanced	Not Tested
	Female	2006-2007	0.7%	21.7%	52.7%	24.3%	0.6%
	Male		3.0%	36.5%	47.8%	12.1%	0.6%
	American Indian		3.3%	45.7%	37.0%	12.0%	2.2%
	Asian		0.5%	20.8%	50.9%	26.4%	1.4%
	Black		2.2%	54.4%	40.4%	2.9%	0.0%
	Hispanic		3.6%	47.7%	41.1%	7.2%	0.4%
	White		1.6%	24.6%	52.6%	20.6%	0.6%
	Non English Proficient		19.7%	67.2%	4.9%	1.6%	6.6%
	Limited English Proficient		2.7%	75.2%	20.7%	1.4%	0.0%
	Special Education		11.8%	66.7%	18.5%	1.3%	1.8%
	Gifted/Talented		0.0%	1.9%	40.4%	57.4%	0.3%
	Economically Disadvantaged		4.7%	49.4%	40.3%	5.0%	0.7%
All Jeffco Students	2006-2007	1.9%	29.2%	50.2%	18.1%	0.6%	
	2005-2006	2.8%	32.6%	50.6%	13.4%	0.6%	
All Colorado Students	2006-2007	3%	36%	46%	15%	1%	
	2005-2006	5%	38%	45%	11%	1%	



CSAP Writing *continued*

Grade 8	Group	Year	Unsatisfactory	Partially Proficient	Proficient	Advanced	Not Tested
		Female	2006-2007	1.2%	31.2%	51.4%	15.4%
	Male		3.9%	43.5%	44.5%	7.2%	1.0%
	American Indian		2.7%	47.3%	41.9%	4.1%	4.1%
	Asian		1.1%	31.2%	52.7%	12.9%	2.2%
	Black		6.8%	45.3%	41.9%	4.3%	1.7%
	Hispanic		4.7%	57.0%	32.7%	3.7%	1.9%
	White		2.1%	33.2%	51.1%	13.0%	0.6%
	Non English Proficient		32.7%	55.8%	0.0%	0.0%	11.5%
	Limited English Proficient		8.2%	82.4%	7.5%	0.0%	1.9%
	Special Education		16.7%	67.8%	11.3%	0.7%	3.4%
	Gifted/Talented		0.0%	4.9%	51.8%	43.3%	0.0%
	Economically Disadvantaged		5.5%	59.9%	30.4%	2.8%	1.4%
	All Jeffco Students	2006-2007	2.6%	37.5%	47.8%	11.2%	0.9%
		2005-2006	3.7%	38.3%	47.7%	9.3%	0.9%
	All Colorado Students	2006-2007	4%	44%	42%	9%	1%
		2005-2006	5%	42%	42%	9%	1%

Grade 9	Group	Year	Unsatisfactory	Partially Proficient	Proficient	Advanced	Not Tested
		Female	2006-2007	1.6%	30.6%	54.0%	12.0%
	Male		5.6%	44.9%	41.9%	5.7%	2.0%
	American Indian		1.4%	43.2%	47.3%	2.7%	5.4%
	Asian		4.0%	33.2%	52.2%	9.3%	1.3%
	Black		6.0%	47.0%	38.8%	6.7%	1.5%
	Hispanic		8.4%	55.7%	29.9%	2.8%	3.1%
	White		2.5%	33.5%	52.2%	10.3%	1.6%
	Non English Proficient		47.7%	37.2%	0.0%	0.0%	15.1%
	Limited English Proficient		16.9%	72.5%	8.5%	0.0%	2.1%
	Special Education		20.5%	65.0%	9.9%	0.2%	4.5%
	Gifted/Talented		0.2%	5.9%	57.6%	35.4%	0.8%
	Economically Disadvantaged		8.6%	56.9%	29.3%	2.0%	3.2%
	All Jeffco Students	2006-2007	3.6%	37.9%	47.8%	8.8%	1.9%
		2005-2006	3.5%	35.6%	49.9%	8.0%	3.0%
	All Colorado Students	2006-2007	5%	44%	42%	7%	2%
		2005-2006	5%	41%	44%	8%	2%

Grade 10	Group	Year	Unsatisfactory	Partially Proficient	Proficient	Advanced	Not Tested
		Female	2006-2007	2.9%	28.2%	53.3%	13.2%
	Male		7.8%	41.5%	42.1%	6.2%	2.3%
	American Indian		10.2%	46.6%	29.5%	5.7%	8.0%
	Asian		8.7%	31.2%	47.6%	11.7%	0.9%
	Black		11.2%	44.9%	38.3%	1.9%	3.7%
	Hispanic		11.9%	50.2%	31.6%	3.0%	3.3%
	White		3.7%	31.5%	51.5%	11.1%	2.1%
	Non English Proficient		58.5%	29.3%	0.0%	0.0%	12.2%
	Limited English Proficient		16.5%	68.6%	11.6%	0.0%	3.3%
	Special Education		27.3%	57.0%	8.4%	0.6%	6.8%
	Gifted/Talented		0.1%	6.4%	57.5%	35.3%	0.7%
	Economically Disadvantaged		11.4%	53.7%	28.3%	2.1%	4.5%
	All Jeffco Students	2006-2007	5.4%	34.9%	47.7%	9.6%	2.4%
		2005-2006	5.9%	36.7%	45.9%	8.4%	3.1%
	All Colorado Students	2006-2007	7%	39%	43%	8%	3%
		2005-2006	7%	39%	43%	8%	3%

test scores & school ratings

CSAP Math

Grade 3	Group	Year	Unsatisfactory	Partially Proficient	Proficient	Advanced	Not Tested
	Female	2006-2007	4.7%	23.1%	46.8%	25.3%	0.1%
	Male		4.8%	22.9%	46.7%	25.2%	0.4%
	American Indian		6.1%	32.9%	50.0%	11.0%	0.0%
	Asian		3.1%	14.8%	42.2%	39.5%	0.4%
	Black		10.2%	34.4%	43.8%	11.7%	0.0%
	Hispanic		10.0%	35.8%	44.4%	9.6%	0.1%
	White		3.2%	19.4%	47.7%	29.4%	0.3%
	Non English Proficient		30.2%	43.6%	23.5%	1.3%	1.3%
	Limited English Proficient		5.2%	40.3%	47.1%	7.5%	0.0%
	Special Education		21.7%	42.4%	31.4%	4.2%	0.3%
	Gifted/Talented		0.2%	1.9%	25.8%	71.9%	0.2%
	Economically Disadvantaged		10.2%	35.8%	42.4%	11.3%	0.3%
All Jeffco Students	2006-2007	4.8%	23.0%	46.8%	25.2%	0.2%	
	2005-2006	5.0%	18.9%	42.5%	33.4%	0.2%	
All Colorado Students	2006-2007	7%	24%	43%	25%	0%	
	2005-2006	7%	22%	42%	29%	0%	

Grade 4	Group	Year	Unsatisfactory	Partially Proficient	Proficient	Advanced	Not Tested
	Female	2006-2007	6.7%	20.2%	48.0%	24.8%	0.2%
	Male		7.0%	18.9%	45.3%	28.5%	0.3%
	American Indian		11.1%	20.8%	48.6%	18.1%	1.4%
	Asian		3.2%	11.9%	47.2%	37.7%	0.0%
	Black		12.3%	34.4%	44.3%	9.0%	0.0%
	Hispanic		14.4%	32.7%	41.2%	11.4%	0.4%
	White		4.9%	16.2%	48.0%	30.7%	0.2%
	Non English Proficient		27.0%	38.0%	27.0%	5.0%	3.0%
	Limited English Proficient		16.9%	45.2%	32.7%	4.8%	0.4%
	Special Education		30.0%	36.3%	27.4%	5.6%	0.6%
	Gifted/Talented		0.0%	0.8%	22.7%	76.4%	0.0%
	Economically Disadvantaged		13.9%	32.7%	42.7%	10.4%	0.2%
All Jeffco Students	2006-2007	6.9%	19.6%	46.6%	26.7%	0.3%	
	2005-2006	5.4%	22.0%	46.5%	25.9%	0.2%	
All Colorado Students	2006-2007	9%	21%	43%	27%	0%	
	2005-2006	8%	23%	43%	26%	0%	

Grade 5	Group	Year	Unsatisfactory	Partially Proficient	Proficient	Advanced	Not Tested
	Female	2006-2007	8.3%	26.0%	36.9%	28.6%	0.2%
	Male		10.0%	22.2%	33.6%	34.1%	0.2%
	American Indian		11.8%	29.4%	41.2%	16.2%	1.5%
	Asian		5.2%	20.3%	33.3%	41.1%	0.0%
	Black		20.3%	35.8%	35.1%	8.8%	0.0%
	Hispanic		20.7%	34.2%	31.1%	13.6%	0.5%
	White		6.1%	21.3%	36.2%	36.2%	0.2%
	Non English Proficient		56.2%	28.9%	7.4%	5.8%	1.7%
	Limited English Proficient		22.6%	44.7%	30.2%	2.1%	0.4%
	Special Education		36.6%	36.8%	17.7%	8.2%	0.6%
	Gifted/Talented		0.0%	2.3%	16.1%	81.6%	0.0%
	Economically Disadvantaged		20.5%	36.3%	30.6%	12.4%	0.3%
All Jeffco Students	2006-2007	9.1%	24.1%	35.2%	31.4%	0.2%	
	2005-2006	6.0%	23.4%	39.2%	31.1%	0.2%	
All Colorado Students	2006-2007	11%	24%	35%	30%	0%	
	2005-2006	9%	25%	38%	27%	0%	



CSAP Math *continued*



Grade 6	Group	Year	Unsatisfactory	Partially Proficient	Proficient	Advanced	Not Tested
	Female	2006-2007	8.4%	24.2%	39.0%	28.1%	0.3%
	Male		9.5%	20.8%	36.0%	33.3%	0.3%
	American Indian		13.4%	25.4%	37.3%	23.9%	0.0%
	Asian		4.0%	18.3%	35.3%	42.5%	0.0%
	Black		20.9%	39.1%	30.0%	10.0%	0.0%
	Hispanic		19.6%	33.2%	34.0%	13.0%	0.2%
	White		6.4%	19.7%	38.6%	34.9%	0.4%
	Non English Proficient		54.9%	25.3%	14.3%	3.3%	2.2%
	Limited English Proficient		21.8%	41.2%	30.0%	7.0%	0.0%
	Special Education		39.6%	33.5%	18.2%	7.0%	1.7%
	Gifted/Talented		0.1%	1.0%	18.4%	80.5%	0.0%
	Economically Disadvantaged		19.2%	33.6%	33.9%	13.1%	0.2%
All Jeffco Students	2006-2007	9.0%	22.4%	37.5%	30.8%	0.3%	
	2005-2006	9.5%	24.9%	38.8%	26.5%	0.3%	
All Colorado Students	2006-2007	13%	26%	35%	25%	0%	
	2005-2006	15%	27%	35%	21%	1%	

Grade 7	Group	Year	Unsatisfactory	Partially Proficient	Proficient	Advanced	Not Tested
	Female	2006-2007	9.1%	33.3%	33.1%	24.2%	0.4%
	Male		10.9%	30.9%	31.7%	26.3%	0.3%
	American Indian		17.2%	46.2%	16.1%	19.4%	1.1%
	Asian		3.7%	25.8%	33.6%	36.4%	0.5%
	Black		29.9%	41.6%	21.9%	5.8%	0.7%
	Hispanic		19.9%	45.2%	25.4%	9.2%	0.2%
	White		7.4%	29.0%	34.4%	28.8%	0.3%
	Non English Proficient		41.7%	46.7%	8.3%	1.7%	1.7%
	Limited English Proficient		27.9%	52.3%	17.1%	2.7%	0.0%
	Special Education		44.3%	40.4%	11.8%	2.7%	0.8%
	Gifted/Talented		0.1%	3.6%	24.7%	71.4%	0.2%
	Economically Disadvantaged		22.7%	44.2%	24.7%	8.1%	0.3%
All Jeffco Students	2006-2007	10.0%	32.1%	32.4%	25.3%	0.3%	
	2005-2006	13.7%	32.6%	30.7%	22.5%	0.5%	
All Colorado Students	2006-2007	14%	35%	30%	21%	1%	
	2005-2006	21%	34%	27%	17%	1%	

Grade 8	Group	Year	Unsatisfactory	Partially Proficient	Proficient	Advanced	Not Tested
	Female	2006-2007	14.5%	31.2%	33.2%	20.6%	0.6%
	Male		16.3%	26.9%	32.2%	24.0%	0.7%
	American Indian		26.0%	28.8%	30.1%	13.7%	1.4%
	Asian		9.1%	21.9%	36.9%	30.5%	1.6%
	Black		30.5%	39.0%	22.9%	5.9%	1.7%
	Hispanic		33.4%	36.3%	20.5%	8.7%	1.1%
	White		11.2%	27.5%	35.4%	25.5%	0.5%
	Non English Proficient		75.0%	13.5%	5.8%	0.0%	5.8%
	Limited English Proficient		52.9%	38.2%	7.6%	1.3%	0.0%
	Special Education		55.5%	29.1%	9.7%	2.4%	3.3%
	Gifted/Talented		0.0%	3.8%	26.8%	69.4%	0.0%
	Economically Disadvantaged		34.6%	36.4%	21.9%	6.4%	0.7%
All Jeffco Students	2006-2007	15.4%	29.0%	32.7%	22.3%	0.6%	
	2005-2006	18.4%	27.0%	30.6%	23.4%	0.6%	
All Colorado Students	2006-2007	22%	31%	29%	17%	1%	
	2005-2006	25%	29%	27%	18%	1%	

test scores & school ratings

CSAP Math *continued*

Grade 9	Group	Year	Unsatisfactory	Partially Proficient	Proficient	Advanced	Not Tested
	Female	2006-2007	23.9%	30.9%	31.3%	12.6%	1.2%
	Male		26.2%	27.8%	28.1%	16.6%	1.2%
	American Indian		25.3%	36.0%	29.3%	5.3%	4.0%
	Asian		16.9%	26.2%	29.8%	25.8%	1.3%
	Black		47.0%	26.9%	19.4%	6.0%	0.7%
	Hispanic		49.2%	28.5%	16.4%	4.1%	1.8%
	White		19.1%	29.6%	33.1%	17.1%	1.1%
	Non English Proficient		82.6%	7.0%	2.3%	0.0%	8.1%
	Limited English Proficient		69.7%	20.4%	5.6%	3.5%	0.7%
	Special Education		72.4%	17.5%	6.0%	1.9%	2.2%
	Gifted/Talented		1.5%	5.7%	36.1%	56.3%	0.3%
	Economically Disadvantaged		49.7%	26.9%	16.7%	4.3%	2.4%
All Jeffco Students	2006-2007	25.1%	29.3%	29.7%	14.7%	1.2%	
	2005-2006	21.9%	29.2%	29.2%	18.0%	1.7%	
All Colorado Students	2006-2007	33%	30%	24%	11%	2%	
	2005-2006	30%	30%	25%	13%	2%	

Grade 10	Group	Year	Unsatisfactory	Partially Proficient	Proficient	Advanced	Not Tested
	Female	2006-2007	26.3%	35.1%	32.0%	4.8%	1.8%
	Male		25.2%	31.7%	33.5%	7.8%	1.8%
	American Indian		40.2%	27.6%	18.4%	5.7%	8.0%
	Asian		20.0%	28.3%	40.9%	10.4%	0.4%
	Black		44.9%	38.3%	13.1%	0.0%	3.7%
	Hispanic		50.1%	30.7%	15.4%	1.7%	2.0%
	White		20.3%	34.2%	36.6%	7.3%	1.6%
	Non English Proficient		84.3%	6.0%	4.8%	1.2%	3.6%
	Limited English Proficient		73.1%	15.1%	7.6%	0.8%	3.4%
	Special Education		67.5%	21.5%	5.0%	0.2%	5.8%
	Gifted/Talented		1.3%	9.3%	60.9%	28.1%	0.4%
	Economically Disadvantaged		50.3%	31.6%	13.2%	2.0%	2.8%
All Jeffco Students	2006-2007	25.7%	33.4%	32.8%	6.3%	1.8%	
	2005-2006	23.9%	35.9%	32.3%	6.0%	1.9%	
All Colorado Students	2006-2007	33%	34%	25%	5%	3%	
	2005-2006	31%	36%	26%	5%	2%	



CSAP Science



Grade 5	Group	Year	Unsatisfactory	Partially Proficient	Proficient	Advanced	Not Tested
	Female	2006-2007	12.6%	42.2%	31.8%	13.1%	0.2%
	Male		12.7%	36.2%	32.0%	19.0%	0.1%
	American Indian		14.7%	51.5%	26.5%	7.4%	0.0%
	Asian		14.7%	38.4%	30.2%	16.4%	0.4%
	Black		21.6%	54.1%	20.9%	3.4%	0.0%
	Hispanic		30.4%	47.2%	18.1%	4.2%	0.1%
	White		7.9%	36.6%	35.8%	19.6%	0.2%
	Non English Proficient		80.2%	16.5%	0.8%	0.0%	2.5%
	Limited English Proficient		48.9%	47.2%	3.8%	0.0%	0.0%
	Special Education		39.5%	44.3%	10.9%	5.0%	0.3%
	Gifted/Talented		0.1%	6.2%	36.0%	57.6%	0.0%
	Economically Disadvantaged		29.1%	49.0%	18.5%	3.5%	0.0%
All Jeffco Students	2006-2007	12.6%	39.2%	31.9%	16.1%	0.2%	
	2005-2006	16.3%	40.9%	30.2%	12.4%	0.3%	
All Colorado Students	2006-2007	19%	39%	28%	13%	0%	
	2005-2006	21%	41%	26%	11%	0%	

Grade 8	Group	Year	Unsatisfactory	Partially Proficient	Proficient	Advanced	Not Tested
	Female	2006-2007	11.0%	25.0%	52.1%	11.4%	0.6%
	Male		12.7%	20.6%	50.0%	16.0%	0.6%
	American Indian		21.9%	20.5%	50.7%	5.5%	1.4%
	Asian		10.2%	21.4%	48.1%	18.7%	1.6%
	Black		29.7%	25.4%	39.0%	5.1%	0.8%
	Hispanic		27.1%	33.4%	33.7%	4.7%	1.1%
	White		8.1%	20.5%	55.1%	15.9%	0.4%
	Non English Proficient		84.6%	9.6%	0.0%	0.0%	5.8%
	Limited English Proficient		50.3%	38.2%	9.6%	1.3%	0.6%
	Special Education		46.6%	28.6%	20.1%	2.0%	2.7%
	Gifted/Talented		0.0%	2.2%	49.5%	48.3%	0.0%
	Economically Disadvantaged		28.5%	31.4%	35.2%	4.0%	0.9%
All Jeffco Students	2006-2007	11.9%	22.7%	51.0%	13.8%	0.6%	
	2005-2006	12.8%	24.0%	51.4%	11.2%	0.6%	
All Colorado Students	2006-2007	20%	27%	44%	8%	1%	
	2005-2006	20%	28%	44%	7%	1%	

Grade 10	Group	Year	Unsatisfactory	Partially Proficient	Proficient	Advanced	Not Tested
	Female	2006-2007	18.1%	24.9%	51.2%	3.9%	1.8%
	Male		16.5%	20.8%	53.5%	7.6%	1.7%
	American Indian		26.4%	31.0%	34.5%	1.1%	6.9%
	Asian		20.3%	22.1%	48.9%	7.4%	1.3%
	Black		31.5%	33.3%	31.5%	0.0%	3.7%
	Hispanic		38.8%	28.8%	29.3%	1.0%	2.0%
	White		12.2%	21.2%	58.0%	6.9%	1.6%
	Non English Proficient		85.5%	6.0%	0.0%	0.0%	8.4%
	Limited English Proficient		71.4%	18.5%	7.6%	0.0%	2.5%
	Special Education		55.5%	19.3%	18.3%	1.2%	5.8%
	Gifted/Talented		0.7%	4.0%	69.2%	25.7%	0.4%
	Economically Disadvantaged		38.5%	30.0%	27.2%	1.6%	2.7%
All Jeffco Students	2006-2007	17.3%	22.8%	52.4%	5.8%	1.8%	
	2005-2006	20.3%	24.8%	47.8%	5.2%	1.9%	
All Colorado Students	2006-2007	25%	24%	44%	4%	3%	
	2005-2006	26%	24%	43%	4%	2%	

Migrant student scores are not reported because the student population is too small (<16 students)

*Economically Disadvantaged as determined by students qualifying for the Free and Reduced Meal Program

To see individual school CSAP scores visit the Colorado Department of Education Web site and view the School Accountability Reports at <http://www.cde.state.co.us/scripts/cfpu/NCLBProfiles0506/SchlDataHQT.asp?SchlCode=0030&level=E&DISTCODE=1420>

To see CSAP scores for the past 10 years visit the Colorado Department of Education Web site at http://www.cde.state.co.us/cdeassess/documents/csap/csap_summary.html

test scores & school ratings

Colorado Student Assessment Program Alternative (CSAPA)

There is a very small group of students with an Individual Education Program (IEP) who are not able to take the general CSAP because of the nature and intensity of their disability. These students need a different way to show what they know and can do. The Colorado Student Assessment Program-Alternate (CSAPA) was developed to measure progress for students who are beginning to demonstrate foundational skills of content standards. The CSAPA was initiated in 2001 and today aligns with all the grade levels and content areas assessed by the CSAP. As a result, every student with a disability will participate in the State assessment system through either the CSAP or CSAPA.

CSAPA Performance

The performance categories for the CSAPA were created to demonstrate the nature of academic skill development for students with the most intense learning needs. These categories include Novice (e.g., reader has beginning reading strategies), Developing (e.g., reader interacts with literacy materials purposefully), Emerging (e.g., reader can recognize his or her name and can follow simple directions), Exploring (reader has an awareness of literacy materials) and Inconclusive (e.g., the student's responses are not evident or are inconsistent). Students are scored on the level of support they need to perform each skill that is combined into a total scale score.

Source: CDE Exceptional Student Services Unit

CSAPA Reading

Grade 3	Group	Year	Novice	Developing	Emerging	Exploring	Inconclusive	No Scores	Number Tested
	Female	2006-2007	45%	50%	5%	0%	0%	0%	22
	Male	2006-2007	32%	48%	9%	2%	0%	9%	44
	White	2006-2007	31%	53%	8%	2%	0%	6%	49
	Economically Disadvantaged	2006-2007	38%	58%	4%	0%	0%	0%	26
	All Jeffco Students	2006-2007	36%	48%	8%	2%	0%	6%	66
		2005-2006	56%	25%	7%	10%	0%	2%	59
	All Colorado Students	2006-2007	47%	33%	9%	6%	0%	4%	654
	2005-2006	51%	31%	8%	8%	<1%	1%	606	

Grade 4	Group	Year	Novice	Developing	Emerging	Exploring	Inconclusive	No Scores	Number Tested
	Female	2006-2007	31%	45%	3%	14%	3%	3%	29
	Male	2006-2007	16%	59%	13%	9%	3%	0%	32
	Hispanic	2006-2007	17%	56%	11%	11%	0%	6%	18
	White	2006-2007	31%	47%	8%	11%	3%	0%	36
	Economically Disadvantaged	2006-2007	30%	48%	7%	7%	4%	4%	27
	All Jeffco Students	2006-2007	23%	52%	8%	11%	3%	2%	61
		2005-2006	43%	38%	3%	3%	8%	5%	37
All Colorado Students	2006-2007	37%	43%	6%	10%	2%	2%	620	
	2005-2006	47%	35%	6%	8%	3%	<1%	580	

Grade 5	Group	Year	Novice	Developing	Emerging	Exploring	Inconclusive	No Scores	Number Tested
	Male	2006-2007	41%	34%	17%	3%	0%	3%	29
	White	2006-2007	33%	33%	17%	8%	0%	8%	24
	All Jeffco Students	2006-2007	35%	35%	18%	5%	0%	8%	40
		2005-2006	27%	39%	15%	12%	7%	0%	41
	All Colorado Students	2006-2007	53%	18%	18%	7%	1%	4%	571
	2005-2006	42%	29%	15%	7%	5%	1%	547	

CSAPA Reading *continued*

Grade 6	Group	Year	Novice	Developing	Emerging	Exploring	Inconclusive	No Scores	Number Tested
	Female	2006-2007	6%	29%	18%	24%	12%	12%	17
	Male	2006-2007	28%	31%	31%	3%	3%	3%	29
	White	2006-2007	22%	28%	25%	6%	9%	9%	32
	Economically Disadvantaged	2006-2007	26%	26%	26%	11%	5%	5%	19
	All Jeffco Students	2006-2007	20%	30%	26%	11%	7%	7%	46
		2005-2006	43%	28%	15%	5%	8%	3%	40
	All Colorado Students	2006-2007	36%	26%	21%	5%	8%	4%	603
		2005-2006	49%	29%	9%	6%	5%	2%	555

Grade 7	Group	Year	Novice	Developing	Emerging	Exploring	Inconclusive	No Scores	Number Tested
	Female	2006-2007	31%	44%	6%	6%	0%	13%	16
	Male	2006-2007	31%	34%	21%	14%	0%	0%	29
	White	2006-2007	32%	38%	12%	12%	0%	6%	34
	All Jeffco Students	2006-2007	31%	38%	16%	11%	0%	4%	45
		2005-2006	27%	24%	22%	16%	9%	2%	55
	All Colorado Students	2006-2007	39%	30%	15%	10%	0%	6%	549
		2005-2006	41%	32%	12%	10%	3%	2%	587

Grade 8	Group	Year	Novice	Developing	Emerging	Exploring	Inconclusive	No Scores	Number Tested
	Female	2006-2007	67%	11%	0%	19%	0%	4%	27
	Male	2006-2007	57%	29%	14%	0%	0%	0%	35
	White	2006-2007	58%	23%	7%	9%	0%	2%	43
	Economically Disadvantaged	2006-2007	65%	24%	12%	0%	0%	0%	17
	All Jeffco Students	2006-2007	61%	21%	8%	8%	0%	2%	62
		2005-2006	44%	30%	9%	9%	5%	3%	66
	All Colorado Students	2006-2007	59%	18%	11%	7%	0%	5%	622
		2005-2006	47%	34%	7%	8%	2%	3%	546

Grade 9	Group	Year	Novice	Developing	Emerging	Exploring	Inconclusive	No Scores	Number Tested
	Female	2006-2007	50%	25%	15%	10%	0%	0%	20
	Male	2006-2007	38%	36%	8%	10%	6%	2%	50
	Hispanic	2006-2007	44%	22%	22%	11%	0%	0%	18
	White	2006-2007	37%	37%	7%	11%	7%	2%	46
	Economically Disadvantaged	2006-2007	61%	26%	9%	4%	0%	0%	23
	All Jeffco Students	2006-2007	41%	33%	10%	10%	4%	1%	70
		2005-2006	38%	19%	19%	9%	6%	9%	47
	All Colorado Students	2006-2007	41%	35%	7%	10%	4%	4%	542
	2005-2006	46%	28%	9%	8%	6%	3%	556	

Grade 10	Group	Year	Novice	Developing	Emerging	Exploring	Inconclusive	No Scores	Number Tested
	Female	2006-2007	50%	10%	20%	20%	0%	0%	30
	Male	2006-2007	35%	15%	27%	12%	0%	12%	26
	White	2006-2007	49%	9%	21%	14%	0%	7%	43
	Economically Disadvantaged	2006-2007	38%	19%	25%	13%	0%	6%	16
	All Jeffco Students	2006-2007	43%	13%	23%	16%	0%	5%	56
		2005-2006	30%	39%	12%	6%	6%	6%	33
	All Colorado Students	2006-2007	36%	30%	13%	15%	0%	5%	531
		2005-2006	48%	31%	7%	8%	4%	2%	496

test scores & school ratings

CSAPA Writing

Grade 3	Group	Year	Novice	Developing	Emerging	Exploring	Inconclusive	No Scores	Number Tested
	Female	2006-2007	55%	32%	0%	0%	0%	14%	22
	Male	2006-2007	52%	23%	9%	5%	0%	11%	44
	White	2006-2007	49%	27%	8%	4%	0%	12%	49
	Economically Disadvantaged	2006-2007	65%	19%	4%	0%	0%	12%	26
	All Jeffco Students	2006-2007	53%	26%	6%	3%	0%	12%	66
		2005-2006	36%	41%	3%	3%	8%	8%	59
	All Colorado Students	2006-2007	53%	22%	8%	4%	5%	8%	654
		2005-2006	50%	28%	9%	4%	6%	3%	606

Grade 4	Group	Year	Novice	Developing	Emerging	Exploring	Inconclusive	No Scores	Number Tested
	Female	2006-2007	38%	34%	14%	3%	7%	3%	29
	Male	2006-2007	19%	59%	9%	3%	9%	0%	32
	Hispanic	2006-2007	28%	44%	11%	0%	11%	6%	18
	White	2006-2007	25%	53%	14%	6%	3%	0%	36
	Economically Disadvantaged	2006-2007	30%	44%	11%	4%	7%	4%	27
	All Jeffco Students	2006-2007	28%	48%	11%	3%	8%	2%	61
		2005-2006	30%	27%	27%	3%	3%	11%	37
	All Colorado Students	2006-2007	37%	40%	8%	5%	6%	4%	620
	2005-2006	41%	27%	17%	8%	5%	2%	580	

Grade 5	Group	Year	Novice	Developing	Emerging	Exploring	Inconclusive	No Scores	Number Tested
	Male	2006-2007	48%	24%	7%	7%	0%	14%	29
	White	2006-2007	42%	21%	13%	8%	0%	17%	24
	All Jeffco Students	2006-2007	43%	25%	13%	5%	0%	15%	40
		2005-2006	34%	37%	10%	17%	2%	0%	41
All Colorado Students	2006-2007	51%	18%	13%	6%	3%	9%	571	
	2005-2006	44%	26%	15%	7%	6%	1%	574	

Grade 6	Group	Year	Novice	Developing	Emerging	Exploring	Inconclusive	No Scores	Number Tested
	Female	2006-2007	18%	18%	18%	24%	6%	18%	17
	Male	2006-2007	38%	28%	17%	10%	3%	3%	29
	White	2006-2007	28%	28%	16%	13%	6%	9%	32
	Economically Disadvantaged	2006-2007	21%	32%	21%	16%	5%	5%	19
	All Jeffco Students	2006-2007	30%	24%	17%	15%	4%	9%	46
		2005-2006	45%	20%	18%	8%	8%	3%	40
	All Colorado Students	2006-2007	45%	19%	15%	5%	11%	5%	603
	2005-2006	48%	19%	15%	6%	9%	3%	555	

Grade 7	Group	Year	Novice	Developing	Emerging	Exploring	Inconclusive	No Scores	Number Tested
	Female	2006-2007	44%	13%	19%	6%	6%	13%	16
	Male	2006-2007	28%	14%	21%	17%	17%	3%	29
	White	2006-2007	35%	15%	21%	9%	15%	6%	34
	All Jeffco Students	2006-2007	33%	13%	20%	13%	13%	7%	45
		2005-2006	18%	24%	18%	18%	15%	7%	55
All Colorado Students	2006-2007	35%	25%	13%	10%	10%	7%	549	
	2005-2006	40%	23%	15%	14%	4%	3%	587	

Grade 8	Group	Year	Novice	Developing	Emerging	Exploring	Inconclusive	No Scores	Number Tested
	Female	2006-2007	37%	26%	15%	4%	15%	4%	27
	Male	2006-2007	34%	37%	23%	6%	0%	0%	35
	White	2006-2007	35%	35%	14%	5%	9%	2%	43
	Economically Disadvantaged	2006-2007	29%	53%	18%	0%	0%	0%	17
	All Jeffco Students	2006-2007	35%	32%	19%	5%	6%	2%	62
		2005-2006	27%	27%	21%	9%	11%	5%	66
	All Colorado Students	2006-2007	31%	36%	16%	7%	4%	5%	622
	2005-2006	28%	37%	18%	9%	4%	4%	546	

CSAPA Writing *continued*

Grade 9	Group	Year	Novice	Developing	Emerging	Exploring	Inconclusive	No Scores	Number Tested
	Female	2006-2007	40%	30%	5%	15%	10%	0%	20
	Male	2006-2007	30%	40%	10%	10%	6%	4%	50
	Hispanic	2006-2007	39%	22%	6%	28%	6%	0%	18
	White	2006-2007	28%	41%	11%	7%	9%	4%	46
	Economically Disadvantaged	2006-2007	48%	39%	0%	9%	4%	0%	23
	All Jeffco Students	2006-2007	33%	37%	9%	11%	7%	3%	70
		2005-2006	28%	28%	6%	15%	13%	11%	47
	All Colorado Students	2006-2007	32%	37%	8%	7%	9%	6%	542
	2005-2006	36%	32%	8%	9%	11%	4%	556	

Grade 10	Group	Year	Novice	Developing	Emerging	Exploring	Inconclusive	No Scores	Number Tested
	Female	2006-2007	33%	17%	17%	7%	27%	0%	30
	Male	2006-2007	35%	12%	8%	23%	12%	12%	26
	White	2006-2007	37%	16%	9%	14%	16%	7%	43
	Economically Disadvantaged	2006-2007	31%	19%	19%	13%	13%	6%	16
	All Jeffco Students	2006-2007	34%	14%	13%	14%	20%	5%	56
		2005-2006	30%	12%	24%	21%	6%	6%	33
	All Colorado Students	2006-2007	30%	20%	15%	11%	18%	5%	531
		2005-2006	37%	26%	17%	11%	6%	4%	496

CSAPA Math

Grade 3	Group	Year	Novice	Developing	Emerging	Exploring	Inconclusive	No Scores	Number Tested
	Female	2006-2007	18%	14%	27%	36%	0%	5%	22
	Male	2006-2007	14%	27%	27%	7%	0%	25%	44
	White	2006-2007	10%	22%	33%	14%	0%	20%	49
	Economically Disadvantaged	2006-2007	27%	23%	19%	23%	0%	8%	26
	All Jeffco Students	2006-2007	15%	23%	27%	17%	0%	18%	66
		2005-2006	15%	42%	25%	5%	11%	2%	55
	All Colorado Students	2006-2007	22%	23%	20%	14%	5%	16%	643
		2005-2006	23%	36%	23%	10%	6%	2%	571

Grade 4	Group	Year	Novice	Developing	Emerging	Exploring	Inconclusive	No Scores	Number Tested
	Female	2006-2007	3%	21%	28%	17%	14%	17%	29
	Male	2006-2007	3%	16%	34%	28%	9%	9%	32
	Hispanic	2006-2007	0%	17%	33%	22%	11%	17%	18
	White	2006-2007	6%	19%	31%	25%	8%	11%	36
	Economically Disadvantaged	2006-2007	0%	22%	30%	15%	11%	22%	27
	All Jeffco Students	2006-2007	3%	18%	31%	23%	11%	13%	61
		2005-2006	27%	27%	27%	8%	5%	5%	37
	All Colorado Students	2006-2007	15%	25%	21%	19%	5%	16%	605
	2005-2006	29%	31%	21%	12%	4%	2%	562	

Grade 5	Group	Year	Novice	Developing	Emerging	Exploring	Inconclusive	No Scores	Number Tested
	Male	2006-2007	0%	34%	31%	17%	0%	17%	29
	White	2006-2007	0%	33%	25%	21%	0%	21%	24
	All Jeffco Students	2006-2007	0%	35%	25%	23%	0%	18%	40
		2005-2006	10%	46%	15%	26%	3%	0%	39
	All Colorado Students	2006-2007	7%	35%	19%	12%	10%	17%	571
	2005-2006	30%	32%	14%	19%	4%	1%	571	

test scores & school ratings

CSAPA Math *continued*

Grade 6	Group	Year	Novice	Developing	Emerging	Exploring	Inconclusive	No Scores	Number Tested
	Female	2006-2007	0%	6%	24%	18%	18%	35%	17
Male	2006-2007	10%	24%	28%	21%	3%	14%	29	
White	2006-2007	3%	22%	31%	13%	6%	25%	32	
Economically Disadvantaged	2006-2007	11%	16%	32%	21%	0%	21%	19	
All Jeffco Students	2006-2007	7%	17%	26%	20%	9%	22%	46	
	2005-2006	35%	28%	13%	10%	13%	3%	40	
All Colorado Students	2006-2007	18%	23%	20%	14%	11%	14%	601	
	2005-2006	42%	26%	10%	11%	9%	2%	546	

Grade 7	Group	Year	Novice	Developing	Emerging	Exploring	Inconclusive	No Scores	Number Tested
	Female	2006-2007	6%	25%	31%	13%	0%	25%	16
Male	2006-2007	7%	17%	31%	21%	21%	3%	29	
White	2006-2007	6%	18%	38%	12%	18%	9%	34	
All Jeffco Students	2006-2007	7%	20%	31%	18%	13%	11%	45	
	2005-2006	14%	31%	17%	24%	14%	2%	59	
All Colorado Students	2006-2007	14%	22%	24%	17%	9%	14%	545	
	2005-2006	31%	31%	15%	15%	5%	3%	585	

Grade 8	Group	Year	Novice	Developing	Emerging	Exploring	Inconclusive	No Scores	Number Tested
	Female	2006-2007	0%	15%	26%	26%	11%	22%	27
Male	2006-2007	0%	26%	26%	31%	3%	14%	35	
White	2006-2007	0%	19%	23%	33%	7%	19%	43	
Economically Disadvantaged	2006-2007	0%	24%	35%	29%	6%	6%	17	
All Jeffco Students	2006-2007	0%	21%	26%	29%	6%	18%	62	
	2005-2006	27%	27%	14%	16%	11%	5%	63	
All Colorado Students	2006-2007	6%	20%	26%	25%	11%	12%	624	
	2005-2006	37%	28%	14%	10%	8%	3%	544	

Grade 9	Group	Year	Novice	Developing	Emerging	Exploring	Inconclusive	No Scores	Number Tested
	Female	2006-2007	10%	25%	25%	15%	10%	15%	20
Male	2006-2007	14%	16%	18%	28%	16%	8%	50	
Hispanic	2006-2007	11%	22%	11%	22%	17%	17%	18	
White	2006-2007	13%	11%	26%	26%	15%	9%	46	
Economically Disadvantaged	2006-2007	13%	30%	13%	26%	13%	4%	23	
All Jeffco Students	2006-2007	13%	19%	20%	24%	14%	10%	70	
	2005-2006	29%	19%	21%	10%	13%	8%	52	
All Colorado Students	2006-2007	7%	15%	28%	24%	13%	12%	543	
	2005-2006	28%	35%	15%	9%	10%	3%	564	

Grade 10	Group	Year	Novice	Developing	Emerging	Exploring	Inconclusive	No Scores	Number Tested
	Female	2006-2007	0%	13%	33%	17%	20%	17%	30
Male	2006-2007	0%	19%	31%	12%	23%	15%	26	
White	2006-2007	0%	19%	30%	19%	19%	14%	43	
Economically Disadvantaged	2006-2007	0%	19%	38%	13%	13%	19%	16	
All Jeffco Students	2006-2007	0%	16%	32%	14%	21%	16%	56	
	2005-2006	18%	24%	24%	11%	16%	8%	38	
All Colorado Students	2006-2007	4%	14%	30%	21%	15%	16%	531	
	2005-2006	27%	33%	14%	11%	11%	3%	504	

CSAPA Science

Grade 5	Group	Year	Novice	Developing	Emerging	Exploring	Inconclusive	No Scores	Number Tested
	Male	2006-2007	28%	41%	7%	17%	0%	7%	29
White	2006-2007	21%	29%	21%	21%	0%	8%	24	
All Jeffco Students	2006-2007	23%	35%	15%	18%	0%	10%	40	
	2005-2006	12%	37%	29%	17%	2%	2%	41	
All Colorado Students	2006-2007	33%	28%	18%	10%	4%	7%	576	
	2005-2006	23%	40%	18%	12%	5%	1%	567	

Grade 8	Group	Year	Novice	Developing	Emerging	Exploring	Inconclusive	No Scores	Number Tested
	Female	2006-2007	19%	41%	19%	4%	15%	4%	27
Male	2006-2007	20%	37%	40%	3%	0%	0%	35	
White	2006-2007	19%	42%	26%	5%	7%	2%	43	
Economically Disadvantaged	2006-2007	24%	47%	29%	0%	0%	0%	17	
All Jeffco Students	2006-2007	19%	39%	31%	3%	6%	2%	62	
	2005-2006	20%	33%	23%	14%	6%	3%	64	
All Colorado Students	2006-2007	25%	35%	24%	6%	5%	5%	623	
	2005-2006	25%	33%	25%	9%	4%	4%	543	

Grade 10	Group	Year	Novice	Developing	Emerging	Exploring	Inconclusive	No Scores	Number Tested
	Female	2006-2007	10%	13%	20%	17%	30%	10%	30
Male	2006-2007	8%	23%	4%	23%	23%	19%	26	
White	2006-2007	12%	16%	16%	19%	23%	14%	43	
Economically Disadvantaged	2006-2007	6%	25%	0%	31%	25%	13%	16	
All Jeffco Students	2006-2007	9%	18%	13%	20%	27%	14%	56	
	All Colorado Students	2006-2007	9%	15%	16%	26%	20%	13%	530

Scores are reported only for groups of 16 or more students

Economically Disadvantaged as determined by students qualifying for the Free and Reduced Meal Program



test scores & school ratings

ACT: High School Juniors

Group	Mean Composite	Number Tested
Female	20.9	3,046
Male	20.4	2,984
American Indian/Alaskan	18.4	122
Asian-American/Pacific Islander	21.1	164
African American/Black	19.0	62
Hispanic	18.1	536
Caucasian-American/White	21.6	3,410
Other/No Response	19.9	1,795
Jeffco	20.0	6,279
Colorado	19.1	50,436

ACT Test Scores

The ACT (American College Testing) is traditionally a college entrance examination. Colorado law requires all high school juniors to take an ACT test designed especially for Colorado students to measure progress in English, reading, math and science.

ACT: College-Bound Graduates

Group	Mean Composite	Number Tested
Female	21.1	2,831
Male	20.8	2,861
American Indian/Alaskan	18.6	88
Asian-American/Pacific Islander	20.9	168
African American/Black	17.2	51
Hispanic	17.9	482
Caucasian-American/White	21.8	3,377
Other/No Response	20.4	1,743
Jeffco	21.0	5,909
Colorado	20.4	49,146
National	21.2	1,300,599

The ACT is scored on a scale of 1 to 36



SAT Test Scores

More than two million students take the SAT every year as part of a college entrance process. The SAT, given by the College Board, is a 3 hour and 45 minute test that measures the critical thinking, mathematical reasoning, and writing skills that students need to do college-level work.

The SAT is scored at a maximum of 800 points per section, with a total possible score of 1,600

SAT: College-Bound Graduates

Group	Reading	Math	Writing	Number Tested
Female	571	561	561	535
Male	569	600	548	431
American Indian or Alaskan Native	*	*	*	7
Asian, Asian American or Pacific Islander	531	587	534	54
African American or Black	*	*	*	8
Mexican or Mexican American	595	568	559	16
Other Hispanic, Latino, or Latin American	529	549	508	33
White	574	581	558	783
Jeffco	570	578	555	966
Colorado	560	565	549	11,142
National	502	515	494	1,494,531

District Embedded Assessments

Jeffco Public Schools has developed a series of district embedded assessments to monitor progress in content areas that are not included in the state CSAP assessments (such as social studies and world languages). Results from these district embedded assessments provide Jeffco teachers with data to guide instruction and advance learning in these areas.

2006-2007 District Embedded Assessment	% Proficient
Art - Grade 5	95.7%
Art - Grades 9-12 - Drawing	70.8%
Instrumental Music Grade 4 - Recorder	77.7%
Instrumental Music Grade 8 - Percussion	42.4%
Instrumental Music Grade 8 - Strings	53.8%
Instrumental Music Grade 8 - Winds	60.1%
Math Assessment Grade 3	47.9%
Physical Education Grade 5	62.8%
Physical Education Grades 9-12 - Fall	58.9%
Physical Education Grades 9-12 - Spring	53.9%
Science Grade 4	66.6%
Science Grade 7 - Life Science	74.0%
Science Grade 8 - Physical Science	59.5%
Science Grade 9 - Earth Science	51.0%
Social Studies Grade 2 - History	81.2%
Social Studies Grade 6 - Civics	64.1%
Social Studies Grade 10 - History	25.5%
Social Studies Grade 12 - Economics	62.9%
World Language Grades 7-12 - Speaking French	59.0%
World Language Grades 7-12 - Speaking German	58.8%
World Language Grades 7-12 - Speaking Spanish	57.5%



test scores & school ratings

Colorado English Language Assessment (CELA)

Federal and state legislation have mandated a new English proficiency test, the CELA (Colorado English Language Assessment). All kindergarten through twelfth grade students who have been identified as having a language background other than English participate in a statewide assessment in the areas of English proficiency in reading, writing, speaking, listening and comprehension.

CELA Results

Kindergarten	Group	Year	Beginning	Early Intermediate	Intermediate	Proficient	Advanced	No Scores	Number Tested
	Female	2006-2007	44%	25%	9%	3%	1%	19%	344
	Male	2006-2007	44%	25%	10%	0%	0%	21%	357
	Asian/Pacific Islander	2006-2007	38%	21%	17%	7%	2%	15%	110
	Hispanic	2006-2007	47%	25%	6%	0%	0%	22%	439
	White	2006-2007	37%	27%	14%	2%	1%	18%	142
	Economically Disadvantaged	2006-2007	46%	25%	7%	0%	0%	23%	395
	All Jeffco Students	2006-2007	44%	25%	9%	2%	0%	20%	701
	All Colorado Students	2006-2007	51%	22%	8%	1%	0%	18%	12,278

Grade 1	Group	Year	Beginning	Early Intermediate	Intermediate	Proficient	Advanced	No Scores	Number Tested
	Female	2006-2007	7%	23%	34%	29%	4%	3%	334
	Male	2006-2007	14%	23%	36%	22%	2%	4%	317
	Asian/Pacific Islander	2006-2007	2%	13%	36%	35%	11%	2%	99
	Hispanic	2006-2007	13%	29%	35%	18%	1%	3%	413
	White	2006-2007	8%	11%	33%	41%	3%	4%	130
	Economically Disadvantaged	2006-2007	12%	28%	38%	18%	0%	3%	430
	All Jeffco Students	2006-2007	10%	23%	35%	26%	3%	3%	651
	All Colorado Students	2006-2007	16%	27%	36%	17%	2%	3%	11,878

Grade 2	Group	Year	Beginning	Early Intermediate	Intermediate	Proficient	Advanced	No Scores	Number Tested
	Female	2006-2007	10%	15%	33%	36%	3%	2%	239
	Male	2006-2007	5%	24%	32%	34%	4%	2%	273
	Asian/Pacific Islander	2006-2007	6%	9%	28%	49%	7%	1%	89
	Hispanic	2006-2007	8%	25%	35%	29%	2%	1%	358
	White	2006-2007	9%	11%	18%	49%	7%	5%	55
	Economically Disadvantaged	2006-2007	8%	23%	35%	30%	2%	2%	375
	All Jeffco Students	2006-2007	7%	20%	32%	35%	3%	2%	512
	All Colorado Students	2006-2007	13%	23%	32%	27%	3%	2%	10,031

Grade 3	Group	Year	Beginning	Early Intermediate	Intermediate	Proficient	Advanced	No Scores	Number Tested
	Female	2006-2007	8%	13%	30%	39%	9%	2%	198
	Male	2006-2007	7%	8%	35%	38%	11%	1%	267
	Asian/Pacific Islander	2006-2007	8%	5%	17%	48%	22%	0%	64
	Hispanic	2006-2007	7%	12%	37%	37%	5%	1%	329
	White	2006-2007	8%	6%	29%	34%	20%	3%	65
	Economically Disadvantaged	2006-2007	8%	12%	37%	37%	6%	1%	364
	All Jeffco Students	2006-2007	7%	10%	33%	38%	10%	1%	465
	All Colorado Students	2006-2007	10%	17%	33%	31%	7%	2%	9,292

Grade 4	Group	Year	Beginning	Early Intermediate	Intermediate	Proficient	Advanced	No Scores	Number Tested
	Female	2006-2007	6%	15%	27%	45%	5%	2%	171
	Male	2006-2007	4%	11%	33%	48%	3%	0%	201
	Asian/Pacific Islander	2006-2007	0%	15%	23%	56%	2%	4%	52
	Hispanic	2006-2007	6%	13%	34%	43%	4%	0%	267
	White	2006-2007	2%	9%	20%	54%	9%	7%	46
	Economically Disadvantaged	2006-2007	5%	14%	32%	44%	3%	1%	288
	All Jeffco Students	2006-2007	5%	13%	30%	47%	4%	1%	372
	All Colorado Students	2006-2007	7%	15%	32%	40%	4%	2%	7,781

Grade 5	Group	Year	Beginning	Early Intermediate	Intermediate	Proficient	Advanced	No Scores	Number Tested
	Female	2006-2007	3%	8%	25%	49%	11%	3%	167
	Male	2006-2007	7%	9%	22%	52%	9%	1%	187
	Asian/Pacific Islander	2006-2007	5%	7%	12%	63%	13%	0%	60
	Hispanic	2006-2007	6%	10%	27%	47%	9%	2%	247
	White	2006-2007	5%	5%	17%	59%	10%	5%	41
	Economically Disadvantaged	2006-2007	7%	9%	25%	49%	9%	1%	279
	All Jeffco Students	2006-2007	5%	8%	23%	51%	10%	2%	354
	All Colorado Students	2006-2007	5%	10%	24%	49%	10%	1%	6,836

Grade 6	Group	Year	Beginning	Early Intermediate	Intermediate	Proficient	Advanced	No Scores	Number Tested
	Female	2006-2007	4%	7%	28%	49%	10%	2%	142
	Male	2006-2007	3%	5%	29%	58%	3%	2%	187
	Asian/Pacific Islander	2006-2007	2%	7%	24%	60%	7%	0%	45
	Hispanic	2006-2007	4%	6%	32%	52%	5%	2%	237
	White	2006-2007	2%	5%	16%	63%	12%	2%	43
	Economically Disadvantaged	2006-2007	4%	7%	32%	53%	3%	1%	260
	All Jeffco Students	2006-2007	3%	6%	29%	54%	6%	2%	329
	All Colorado Students	2006-2007	7%	9%	32%	43%	6%	2%	5,440

Grade 7	Group	Year	Beginning	Early Intermediate	Intermediate	Proficient	Advanced	No Scores	Number Tested
	Female	2006-2007	1%	4%	16%	64%	13%	3%	137
	Male	2006-2007	4%	4%	23%	54%	15%	1%	151
	Asian/Pacific Islander	2006-2007	7%	7%	17%	40%	20%	10%	30
	Hispanic	2006-2007	2%	4%	19%	62%	12%	0%	202
	White	2006-2007	0%	2%	23%	54%	19%	2%	48
	Economically Disadvantaged	2006-2007	2%	4%	20%	60%	12%	2%	241
	All Jeffco Students	2006-2007	2%	4%	19%	58%	14%	2%	288
	All Colorado Students	2006-2007	7%	8%	24%	48%	10%	3%	4,867

Grade 8	Group	Year	Beginning	Early Intermediate	Intermediate	Proficient	Advanced	No Scores	Number Tested
	Female	2006-2007	3%	4%	9%	61%	19%	4%	94
	Male	2006-2007	2%	5%	21%	51%	15%	7%	120
	Asian/Pacific Islander	2006-2007	0%	5%	19%	57%	14%	5%	21
	Hispanic	2006-2007	1%	5%	15%	57%	15%	6%	145
	White	2006-2007	7%	2%	15%	49%	22%	5%	41
	Economically Disadvantaged	2006-2007	2%	5%	18%	58%	12%	6%	163
	All Jeffco Students	2006-2007	2%	5%	15%	55%	17%	6%	214
	All Colorado Students	2006-2007	7%	7%	23%	47%	12%	3%	4,341

Grade 9	Group	Year	Beginning	Early Intermediate	Intermediate	Proficient	Advanced	No Scores	Number Tested
	Female	2006-2007	13%	16%	28%	35%	2%	5%	93
	Male	2006-2007	10%	12%	34%	32%	5%	7%	146
	Asian/Pacific Islander	2006-2007	19%	7%	22%	37%	7%	7%	27
	Hispanic	2006-2007	10%	15%	32%	33%	4%	7%	184
	White	2006-2007	13%	13%	39%	26%	4%	4%	23
	Economically Disadvantaged	2006-2007	8%	15%	36%	31%	4%	6%	176
	All Jeffco Students	2006-2007	11%	13%	32%	33%	4%	6%	239
	All Colorado Students	2006-2007	11%	12%	31%	36%	4%	7%	4,420

Grade 10	Group	Year	Beginning	Early Intermediate	Intermediate	Proficient	Advanced	No Scores	Number Tested
	Female	2006-2007	11%	8%	27%	38%	10%	5%	97
	Male	2006-2007	11%	10%	25%	43%	3%	7%	116
	Asian/Pacific Islander	2006-2007	19%	11%	25%	39%	6%	0%	36
	Hispanic	2006-2007	9%	10%	25%	40%	7%	9%	146
	White	2006-2007	11%	7%	29%	50%	4%	0%	28
	Economically Disadvantaged	2006-2007	11%	11%	25%	40%	8%	5%	156
	All Jeffco Students	2006-2007	11%	9%	26%	41%	7%	6%	213
	All Colorado Students	2006-2007	10%	10%	29%	39%	6%	6%	3,547

test scores & school ratings

CELA Results *continued*

Grade 11	Group	Year	Beginning	Early Intermediate	Intermediate	Proficient	Advanced	No Scores	Number Tested
	Female	2006-2007	12%	13%	24%	38%	8%	5%	76
	Male	2006-2007	11%	10%	30%	39%	5%	5%	98
	Asian/Pacific Islander	2006-2007	14%	24%	29%	19%	14%	0%	21
	Hispanic	2006-2007	13%	11%	24%	41%	5%	7%	118
	White	2006-2007	7%	7%	34%	45%	3%	3%	29
	Economically Disadvantaged	2006-2007	10%	12%	27%	43%	4%	4%	123
	All Jeffco Students	2006-2007	11%	11%	27%	39%	6%	5%	174
	All Colorado Students	2006-2007	7%	11%	28%	39%	6%	8%	2,564

Grade 12	Group	Year	Beginning	Early Intermediate	Intermediate	Proficient	Advanced	No Scores	Number Tested
	Female	2006-2007	11%	14%	37%	24%	2%	13%	63
	Male	2006-2007	10%	23%	29%	23%	5%	10%	73
	Asian/Pacific Islander	2006-2007	17%	41%	21%	14%	3%	3%	29
	Hispanic	2006-2007	11%	14%	37%	20%	4%	15%	81
	White	2006-2007	0%	9%	32%	45%	5%	9%	22
	Economically Disadvantaged	2006-2007	9%	22%	34%	21%	2%	12%	95
	All Jeffco Students	2006-2007	10%	19%	32%	24%	4%	11%	136
	All Colorado Students	2006-2007	7%	12%	32%	35%	5%	10%	2,014

Overall Scale Score is an average of Speaking, Listening, Reading and Writing

Scores are reported only for groups of 16 or more students

Economically Disadvantaged as determined by students qualifying for the Free and Reduced Meal Program



Accountability Reporting by School - Elementary Schools

Elementary Schools	Accredited	SAR Rating	Met AYP Indicators
Adams Elementary	Accredited: High Performing	high	100%
Allendale Elementary	Accredited: Academic Watch	low	100%
Bear Creek Elementary	Accredited: High Performing	excellent	100%
Belmar Elementary	Accredited	average	100%
Bergen Meadow Primary	No Rating	No test administered in K-2	
Bergen Valley Intermediate	Accredited: High Performing	excellent	100%
Blue Heron Elementary	Accredited	high	100%
Bradford Elementary	Accredited: High Performing	high	100%
Bradford Intermediate School	Accredited: High Performing	excellent	100%
Brady Exploration Elementary	Accredited: Academic Watch	unsatisfactory	67%
Campbell Elementary	Accredited: Academic Watch	average	100%
Coal Creek Canyon Elementary	Accredited	average	100%
Collegiate Academy Charter School	Accredited	average	100%
Colorow Elementary	Accredited	high	100%
Columbine Hills Elementary	Accredited	average	100%
Compass Montessori Golden Elementary	Accredited: Academic Watch	low	88%
Compass Montessori Wheat Ridge Elementary	Accredited	average	100%
Coronado Elementary	Accredited	high	100%
Deane Elementary	Accredited: High Performing	average	100%
Dennison Elementary	Accredited: High Performing	excellent	100%
Devinny Elementary	Accredited	excellent	100%
Dutch Creek Elementary	Accredited	average	100%
Edgewater Elementary	Accredited	low	100%
Eiber Elementary	Accredited	low	88%
Elk Creek Elementary	Accredited: High Performing	high	100%
Excel Academy Elementary	Accredited: Academic Watch	average	100%
Fairmount Elementary	Accredited: High Performing	high	100%
Fitzmorris Elementary	Accredited: High Performing	average	100%
Foothills Elementary	Accredited: High Performing	average	100%
Foster Elementary	Accredited: High Performing	low	100%
Free Horizon Montessori	Accredited: High Performing	high	100%
Fremont Elementary	Accredited	average	100%
Glennon Heights Elementary	Accredited	average	100%
Governor's Ranch Elementary	Accredited	high	100%
Green Gables Elementary	Accredited: Academic Watch	high	100%
Green Mountain Elementary	Accredited	average	100%
Hackberry Hill Elementary	Accredited	high	100%
Hutchinson Elementary	Accredited: High Performing	high	100%
Interventions Transitional Program	No Rating	Alt Ed Campus	100%
Jeffco Open School Elementary	Accredited	low	100%
Jefferson Academy Elementary	Accredited	high	100%
Kendallvue Elementary	Accredited	high	100%
Kendrick Lakes Elementary	Accredited: High Performing	high	100%
Kullerstrand Elementary	Accredited	low	96%
Kyffin Elementary	Accredited: High Performing	excellent	100%
Lasley Elementary	Accredited: High Performing	average	100%
Lawrence Elementary	Accredited	average	100%
Leawood Elementary	Accredited	high	100%
Lincoln Academy Elementary	Accredited: High Performing	high	100%
Little Elementary	Accredited: Academic Watch	average	100%
Lukas Elementary	Accredited: Academic Watch	average	100%
Lumberg Elementary	Accredited: Academic Watch	low	100%
Maple Grove Elementary	Accredited: High Performing	excellent	100%
Marshdale Elementary	Accredited: High Performing	excellent	100%
Martensen Elementary	Accredited: Academic Watch	low	100%
Meiklejohn Elementary	Accredited	high	100%
Miller Special Elementary	No Rating	Alt Ed Campus	50%
Mitchell Elementary	Accredited: High Performing	high	100%
Molholm Elementary	Accredited: High Performing	low	97%

Title 1 schools on school improvement (that have not met AYP determination for two consecutive years) are indicated in **bold**.



test scores & school ratings

Accountability Reporting by School - Elementary Schools

Elementary Schools	Accredited	SAR Rating	Met AYP Indicators
Montessori Peaks Academy	Accredited: High Performing	average	100%
Mortensen Elementary	Accredited	average	100%
Mount Carbon Elementary	Accredited	high	100%
Normandy Elementary	Accredited: High Performing	excellent	100%
Parmalee Elementary	Accredited: High Performing	excellent	100%
Parr Elementary	Accredited: Academic Watch	average	100%
Patterson Elementary	Accredited: High Performing	average	100%
Peck Elementary	Accredited: High Performing	high	100%
Peiffer Elementary	Accredited	average	100%
Pennington Elementary	Accredited: Academic Watch	low	96%
Pleasant View Elementary	Accredited	low	94%
Powderhorn Elementary	Accredited	high	100%
Prospect Valley Elementary	Accredited: High Performing	high	100%
Ralston Elementary	Accredited: High Performing	excellent	100%
Red Rocks Elementary	Accredited: High Performing	excellent	100%
Rocky Mountain Academy Elementary	Accredited: High Performing	high	100%
Rocky Mountain Deaf Elementary School	Accredited: High Performing	Alt Ed Campus	83%
Rooney Ranch Elementary	Accredited	high	100%
Russell Elementary	Accredited	low	100%
Ryan Elementary	Accredited	high	100%
Secrest Elementary	Accredited	low	92%
Semper Elementary	Accredited: Academic Watch	high	100%
Shaffer Elementary	Accredited: High Performing	excellent	100%
Shelton Elementary	Accredited: Academic Watch	average	100%
Sheridan Green Elementary	Accredited: High Performing	high	100%
Sierra Elementary	Accredited: High Performing	high	100%
Slater Elementary	Accredited	average	100%
South Lakewood Elementary	Accredited	average	100%
Stein Elementary	Accredited	average	100%
Stevens Elementary	Accredited	average	100%
Stober Elementary	Accredited	high	100%
Stony Creek Elementary	Accredited	high	100%
Stott Elementary	Accredited: High Performing	average	100%
Swanson Elementary	Accredited: Academic Watch	low	83%
Thomson Elementary	Accredited: High Performing	average	100%
Ute Meadows Elementary	Accredited: High Performing	high	100%
Van Arsdale Elementary	Accredited: High Performing	high	100%
Vanderhoof Elementary	Accredited	high	100%
Vivian Elementary	Accredited	average	100%
Warder Elementary	Accredited	average	100%
Weber Elementary	Accredited	high	100%
Welchester Elementary	Accredited: Probation	average	100%
West Jefferson Elementary	Accredited	high	100%
West Woods Elementary	Accredited: High Performing	excellent	100%
Westgate Elementary	Accredited	average	96%
Westridge Elementary	Accredited: High Performing	high	100%
Wilmore-Davis Elementary	Accredited: Academic Watch	average	100%
Wilmot Elementary	Accredited: High Performing	excellent	100%
Witt Elementary	Accredited	average	100%
Woodrow Wilson Academy Elementary	Accredited	high	100%
Zerger Elementary	Accredited: High Performing	average	100%

Title 1 schools on school improvement (that have not met AYP determination for two consecutive years) are indicated in **bold**.

Accountability Reporting by School - Middle Schools

Middle Schools	Accredited	SAR Rating	Met AYP Indicators
Arvada Middle School	Accredited	low	97%
Bear Creek Middle	Accredited: High Performing	excellent	100%
Bell Middle School	Accredited: High Performing	high	97%
Brady Exploration Middle School	Accredited: Academic Watch	unsatisfactory	67%
Carmody Middle School	Accredited: High Performing	high	100%
Coal Creek Canyon Middle	Accredited	excellent	100%
Collegiate Academy Charter Middle School	Accredited	average	100%
Compass Montessori Golden Secondary	Accredited	average	100%
Creighton Middle School	Accredited: High Performing	high	97%
Deer Creek Middle School	Accredited	excellent	100%
D'Evelyn Middle	Accredited: High Performing	excellent	100%
Drake Middle School	Accredited: High Performing	high	100%
Dunstan Middle School	Accredited	high	97%
Evergreen Middle School	Accredited: High Performing	excellent	100%
Everitt Middle School	Accredited	average	94%
Excel Academy Middle	Accredited: Academic Watch	average	100%
Falcon Bluffs Middle School	Accredited: High Performing	excellent	100%
Interventions Transitional Program	No Rating	Alt Ed Campus	90%
Jeffco Open Middle School	Accredited	average	100%
Jefferson Academy Secondary	Accredited	high	100%
Ken Caryl Middle School	Accredited: High Performing	excellent	97%
Lincoln Academy Middle School	Accredited	high	100%
Mandalay Middle School	Accredited	high	95%
The Manning School	Accredited: High Performing	excellent	100%
Miller Special Middle School	No Rating	Alt Ed Campus	50%
Montessori Peaks Middle School	Accredited: High Performing	high	100%
Moore Middle School	Accredited: High Performing	high	100%
North Arvada Middle School	Accredited	average	97%
Oberon Middle School	Accredited	high	100%
O'Connell Middle School	Accredited	low	78%
Rocky Mountain Academy Middle School	Accredited: High Performing	excellent	100%
Rocky Mountain Deaf Middle School	*	Alt Ed Campus	100%
Summit Ridge Middle School	Accredited: High Performing	excellent	100%
Wayne Carle Middle School	Accredited	high	100%
West Jefferson Middle School	Accredited: High Performing	excellent	100%
Wheat Ridge Middle School	Accredited	low	100%
Woodrow Wilson Academy Middle	Accredited	high	100%

Title 1 schools on school improvement (that have not met AYP determination for two consecutive years) are indicated in **bold**.

* Accreditation is at elementary level



test scores & school ratings

Accountability Reporting by School - High Schools

	High Schools	Accredited	SAR Rating	Met AYP Indicators
High Schools	Alameda High School	Accredited	low	72%
	Arvada High School	Accredited: High Performing	average	88%
	Arvada West High School	Accredited: High Performing	high	100%
	Bear Creek High School	Accredited	high	94%
	Brady Exploration High School	Accredited: Academic Watch	low	78%
	Chatfield High School	Accredited: High Performing	high	100%
	Collegiate Academy Charter High School	Accredited	average	100%
	Columbine High School	Accredited	high	89%
	Compass Montessori Golden High School	Accredited: High Performing	high	100%
	Conifer High School	Accredited	excellent	100%
	Dakota Ridge High School	Accredited: High Performing	high	100%
	D'Evelyn Secondary	Accredited: High Performing	excellent	100%
	Evergreen High School	Accredited	excellent	100%
	Golden High School	Accredited: High Performing	high	96%
	Green Mountain High School	Accredited: Academic Watch	high	100%
	Interventions Transitional Program	No Rating	Alt Ed Campus	60%
	Jeffco Open High School	Accredited	low	80%
	Jefferson Academy High School	Accredited	high	100%
	Jefferson High School	Accredited	low	72%
	Lakewood High School	Accredited	high	88%
	Long View High School	Accredited	Alt Ed Campus	67%
	McLain High School	Accredited	low	50%
	Miller Special High School	Alternative Campus: No Rating	Alt Ed Campus	80%
	New America High School	Accredited	unsatisfactory	100%
	Pomona High School	Accredited: High Performing	high	100%
	Ralston Valley High School	Accredited	excellent	100%
	Standley Lake High School	Accredited: High Performing	high	100%
	Wheat Ridge High School	Accredited	average	89%

Title 1 schools on school improvement (that have not met AYP determination for two consecutive years) are indicated in **bold**.



state & federal reporting requirements

This Annual Report is designed to provide basic information about the Jeffco Public Schools overall achievements for the 2006-2007 school year. To get detailed information about schools' academic achievement and information required by the State of Colorado and the federal government, visit these Web sites, or the reference provided:

Assessment Data

Legislation: NCLB & Accreditation

Percent of ALL students, at each proficiency level, for reading and math CSAP and CSAPA, by grade span, and disaggregated at the school and district level, and compared to the district and state average, including two years of trend data.

http://www.cde.state.co.us/cdeassess/documents/csap/csap_disag.html

Legislation: Accreditation

Trend data for science and writing assessments, aggregated by grade and subject area, and disaggregated by all student groups; compared with the state averages.

http://www.cde.state.co.us/cdeassess/documents/csap/csap_disag.html

Accountability Data

Legislation: NCLB & Accreditation

Percent of all students tested on reading and math CSAP and CSAPA by grade span and disaggregated groups at the school and district level (use AYP participation rate data). Accreditation of schools and AYP performance of each school disaggregated.

<http://www.cde.state.co.us/scriptscfpu/NCLBProfiles0607/DistData.asp?DistCode=1420>

See page 36 of this Annual Report

Legislation: NCLB

The number and name of Title I schools identified for improvement, corrective action and restructuring and the percent of schools in the district identified for improvement, corrective action and restructuring.

<http://www.cde.state.co.us/FedPrograms/AYP/index.asp>

Teacher Quality

Legislation: NCLB

Professional qualifications of all teachers, and percent of teachers with emergency or initial license. Percent of classes not taught by a highly qualified teacher: overall and disaggregated by poverty level of schools.

<http://www.cde.state.co.us/scriptscfpu/NCLBProfiles0506/SchlDataHQT.asp?SchlCode=0030&level=E&DISTCODE=1420>

See page 6 of this Annual Report

Information about attendance, dropout, graduation rates and the number of expelled and suspended students can be found on page 4 of this Annual Report. Advanced placement information can be found on page 8.



JEFFCO
PUBLIC SCHOOLS
Building Bright Futures

